



Way of Life!

SUZUKI MARIN
TILLBEHÖR, SERVICE
& SNABBLISTA



WELCOME TO THE 50TH ANNIVERSARY OF SUZUKI OUTBOARDS

We've been at the forefront of outboard technology since we created our first outboard D55 in 1965 and will be celebrating the 50th anniversary in 2015.

The engines used in our outboard motors have always been designed exclusively for marine use and we have continually brought original technologies to the market. We have led the way with innovations such as the down thrust propeller system in 1965, developing the first ever stainless steel water pump housing in 1973, launching oil injection outboards in 1980, inventing ceramic fibre reinforced metal pistons in 1990, introducing the world's first 220.7kW (300PS) V6 four stroke outboard in 2006 and, in another world first, launching a keyless ignition system on the DF200AP.

We have come a long way since 1965 and our current range of four stroke outboards is second to none in the market place. Our engineers are passionate about boating and willing to spend all of their time perfecting our outboard motors so that our products enable you to maximise your time on the water. So, from the light-weight and portable DF2.5 to the award winning power of the DF300AP, we've got an outboard to suit your way of life.



1960s - D55



1970s - DT25



1980s - DT200 EXANTÉ

KEY MOMENTS IN OUR HISTORY:

1965

Our first outboard, the D55, launched..

1980

We first invented oil injection for outboards, and introduced the oil injection series DT85OI, DT115OI and DT140OI.

1987

DT200 Exanté wins the first "Most Innovative Products" award from the National Marine Manufacture's association (NMMA).

1994

Introduction of DF9.9 and DF15, our first four stroke outboards.

1998

Introduction of DF40 and DF50, our first four stroke outboards with DOHC 4 valves for each cylinder. DF40 and DF50 win the "Innovation Award" from the International Marine Trades Exposition and Convention (IMTEC), and it makes Suzuki the first manufacturer to receive this award two years in a row.

1966

Export of Suzuki Outboard Motors begins.

1985

DT150 and DT200, our first V6 models launched.

1990

DT225 added to V6 series and new Electronic Fuel Injection System introduced.

1997

Introduction of DF60 and DF70, our first four stroke outboards with Electronic Fuel Injection System. DF60 and DF70 win the "Innovation Award" from the International Marine Trades Exposition and Convention (IMTEC).



1990s - DF70



2000s - DF300



2010s - DF200AP



2003

DF200/225/250, the first Suzuki four stroke V6 outboards launched. DF250 wins the "IMTEC Innovation Award".

2008

New generation four stroke DF70A/80A/90A debut. DF90A is the lightest, most compact outboard in 66.2kW (90PS) four stroke class and is the first outboard to utilise Suzuki Lean Burn Technology.

2011

New DF300AP is the world's first Selective Rotation outboard. DF300AP wins the "2012 NMMA Award for Innovation".

2015

Launch of new DF200A/AP with world-leading keyless ignition technology

2000

DF90 and DF115 marketed. These models are the first to utilise an offset drive shaft, making them the most compact outboards in their class.

2006

DF300 is the industry's first 220.7kW (300PS) V6 four stroke outboard, and the first outboard to utilise an electronic remote control. DF300 is the winner, the IBEX 2006 Innovation Award from The National Marine Manufacturer's Association (NMMA).

2010

New DF40A/50A win the "2011 NMMA Award for Innovation".

2012

Introduction of new generation DF15A/20A, the world's first outboards to feature battery-less Fuel Injection in the 11.0kW (15PS)/14.7kW (20PS) class. Suzuki was honored to be chosen as the sole supplier of outboard motors to the London 2012 Olympic and Paralympic Games Sailing Regatta.



KONTAKTUPPGIFTER:

Orderkontor

Telefon:

08 92 34 20

Mail:

innesaljmotor@kgk.se

Serviceavdelning

Telefon:

08 92 33 01/ 08 92 33 17

Mail:

marinservice@kgk.se

Kom ihåg att alltid ha motornummer tillgängligt vid kontakt med KGK Motor AB



MODEL NAME AND ENGINE NUMBER

NOTE : Items and their part numbers showing in this catalogue are basically applicable to models of following engine numbers. Please consult your local dealers regarding other models and their rigging-parts and accessories.

model	engine number
DF300AP	30002P-510001~
DF250AP	25003P-510001~
DF250T	25003F-510001~
DF250Z	25003Z-510001~
DF225T	22503F-510001~
DF225Z	22503Z-510001~
DF200AT	20003F-510001~
DF200AZ	20003Z-510001~

model	engine number
DF200AF	20003P-510001~
DF200T	20002F-510001~
DF200Z	20002Z-510001~
DF175T	17502F-510001~
DF175Z	17502Z-510001~
DF150T	15002F-510001~
DF150Z	15002Z-510001~
DF140AT	14003F-510001~

model	engine number
DF140AZ	14003Z-510001~
DF115AT	11503F-510001~
DF115AZ	11503Z-510001~
DF100AT	10003F-510001~
DF90A	09003F-510001~
DF80A	08002F-510001~
DF70A	07003F-510001~
DF60AV	06003F-510001~

model	engine number
DF60A	06002F-510001~
DF50AV	05004F-510001~
DF50A	05003F-510001~
DF40A	04003F-510001~
DF30A	03003F-510001~
DF25A	02504F-510001~
DF20A	02002F-510001~
DF15A	01504F-510001~

model	engine number
DF9.9B	00995F-510001~
DF9.9A	00994F-510001~
DF8A	00801F-510001~
DF6	00602F-510001~
DF5	00502F-510001~
DF4	00402F-510001~
DF2.5	00252F-510001~



TABLE OF CONTENTS

02	WELCOME TO THE 50TH ANNIVERSARY OF SUZUKI OUTBOARDS
06	NEW MULTI FUNCTION GAUGE
07	NEW SUZUKI KEYLESS START SYSTEM
08	SUZUKI MODULAR INSTRUMENT SYSTEM
10	COMPONENT OF SUZUKI MODULAR INSTRUMENT SYSTEM
12	CONNECTION FOR SUZUKI MODULAR INSTRUMENT SYSTEM
14	ANALOG INSTRUMENT
16	ELECTRONIC THROTTLE AND SHIFT SYSTEM
18	COMPONENT OF SUZUKI PRECISION CONTROL
20	MECHANICAL REMOTE CONTROL SYSTEM
22	COMPONENT OF MECHANICAL REMOTE CONTROL SYSTEM
24	STEERING
26	ELECTRICAL PARTS
27	ANODE/FUEL SYSTEM
30	CARE & MAINTENANCE ITEM
32	APPLICATION CHART
34	SERVICE/SNABBLISTA

REFERENCE

Part Number	15-digit alpha-numerical number shows Part Number to be used for ordering.
Gauge Size	Shows the size (2" or 4") of the gauge.
Background	Shows a main color of display panel on the front of a gauge.
Applicable Model	Shows typical or recommended models of ENGINES that RIGGING-PARTS and ACCESSORIES can be installed to.
Maximum Speed	Shows maximum speed that SPEEDOMETER displays.
kph	Kilometers Per Hour
mph	Miles Per Hour
knots	Knots

NEW MULTI FUNCTION GAUGE

MAIN FEATURES

HIGH PERFORMANCE

- Multi-function gauge displays a wide variety of information such as engine rpm, speed, trim angle, as well as diagnostics based on digital data received from the outboard motor.
- Gauges offer great reliability utilizing Suzuki's original warning system to provide the operator with accurate warning information.
- NMEA2000®* terminal offers compatibility with a wide range of marine equipment by other manufacturers (pending).

SUPERIOR VISIBILITY

- First color LCD offered as genuine parts by an outboard manufacturer. Suzuki's next generation standard equipment gauge offers easy to use multi-function operation with superior readability.
- Easy to see, easy to read, easy to understand display offers a variety of modes including day and night modes and digital or analog readouts.

COMPACT

- Compact, highly versatile gauge requires an 85mm hole for mounting making them the perfect replacement for 4-inch** analog gauges.

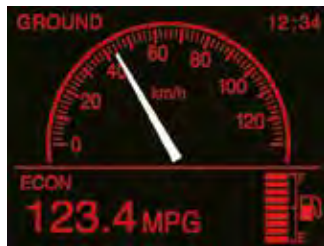
* NMEA2000® is an NMEA (National Marine Electronics Association) standard communication protocol used for exchanging data between marine control units.

** 4-inch gauges that require 85mm mounting holes (as researched by Suzuki)

DISPLAY VARIATIONS



Analog All



Analog Speed (Night)



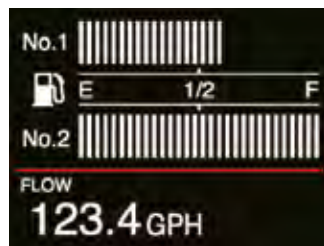
Analog Tacho



Digital All



Digital Tacho (Night)



Fuel

DESIGN



Analog/Day mode



Digital/Night mode



INFORMATION

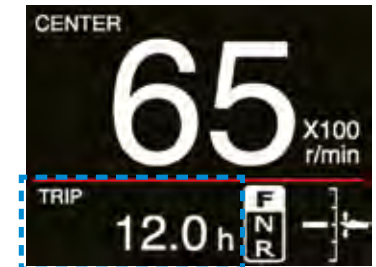
Analog Tacho & Speed Mode

Engine position Engine rpm Ground or Water



Fuel Trim Shift Time Warning Indicator

Tacho Mode



- Fuel flow [l/h, gph] (instantaneous)
- Mileage [km/l, mpg] (instantaneous and average)
- Trip time [h], Trip distance [km, M, NM]
- Engine hour, Voltage, Water temp and more...

SPECIFICATIONS

- 3.5" Color display
- Size: 105mm(W)×105mm(H)×16mm(D)
- Diagnostic display
- Easy installation and setup
Φ85mm hole & large resin nut
- Includes protective cover
- NMEA2000 output (pending)
- Applicable models:
DF9.9B-DF300AP

Speed sensor or GPS module will be required in order to display the speed.

The NEW MULTI FUNCTION GAUGE is planned to be launched from the next spring.

OBS! SMIS fungerar ej på 6- motorer eller nyare!

- Design and specifications may change without notice due to improvements in performance and function.

NEW SUZUKI KEYLESS START SYSTEM



EASY OPERATION

- Suzuki original engine starting system offers a variety of functions. The key-fob is easy to carry and one is all you need to enjoy stress-free starts for greater boating pleasure.
- One step ahead of the competition, the Suzuki Keyless Start System requires no mechanical key so the key-fob remains safely in your pocket.

WATERPROOF FLOAT KEY-FOB

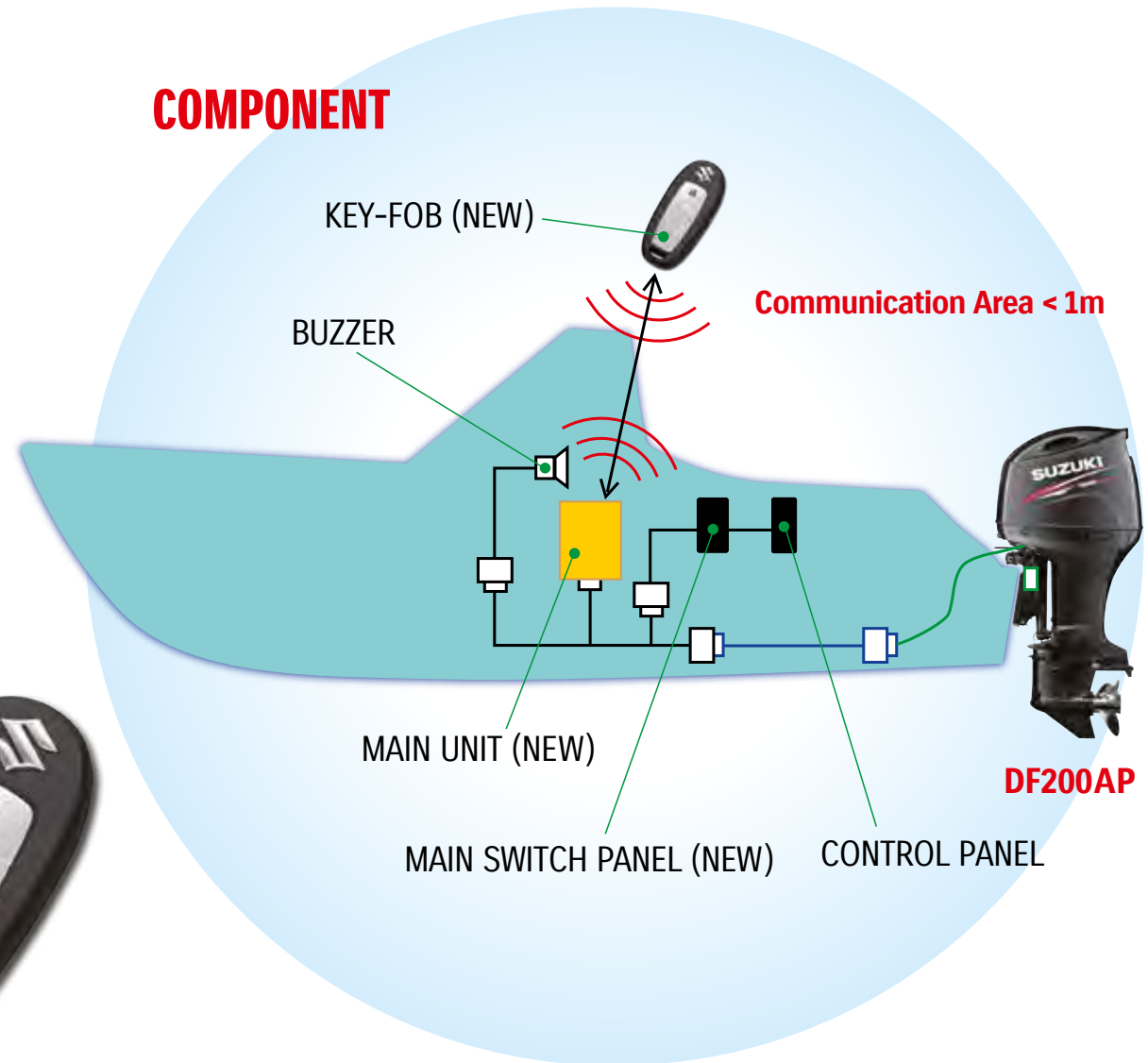
- The easy to carry key-fob remains safely in your pocket reducing risk of a lost key. The key-fob is waterproof and floats so should it ever go overboard it is retrievable.

HIGH SECURITY

- Suzuki's system features an immobilizer function for added peace of mind. IC access codes installed in the key-fob and engine must match for the engine to start. This prevents starting the engine with the wrong key making the system a good theft deterrent as well.



COMPONENT



Availability may differ in some regions. Please contact your local Suzuki dealer for more information.

The NEW SUZUKI KEYLESS START SYSTEM is planned to be launched from the next spring with DF200AP. Planning to apply to other models one after another.

• Design and specifications may change without notice due to improvements in performance and function.

SUZUKI MODULAR INSTRUMENT SYSTEM

SUZUKI MODULAR INSTRUMENT SYSTEM (S.M.I.S.) uses an easy to connect and expandable cable system to transmit graphic and numerical data to Multi-Function gauges. Easy to set up and install system can be used with nearly any boat and DF300 SUZUKI Outboard. Connected to the NMEA2000® compatible system, the gauges can display real-time readings from compatible electronic probes and the exclusive SMIS engine interface to monitor all engine functions. (Engine Monitor with 4" gauge only)

APPLICABLE MODELS : DF9.9B-DF300AP

SMIS MULTI-FUNCTION GAUGE

The 4" multi-function gauge uses a state-of-the-art high-contrast, dot matrix display to monitor real-time graphic and numerical digital data. When connected into the SMIS system, it can monitor all engine functions, act as a speedometer, tachometer, GPS* and many others. (*GPS requires additional hardware.) The 2" multi-function gauge is capable of all functions of the 4" gauge except diagnostic information. When connected to the SMIS system, it can be programmed to monitor all other functions.

4" SMIS MULTI-FUNCTION GAUGE



Quad analog page as a tachometer, a volt meter, a water-pressure gauge and a speedometer for single engine



990C0-88161-000 001

with a gray bezel + a T-connector (990C0-88110-000) + Operation & Installation Manual

Examples of display**



Engine trim page as a trim gauge for single engine



Single analog page as a speedometer



Dual digital page as a hour meter and a speedometer for single engine



Single analog page as a tachometer for single engine



Fuel manager page as a fuel gauge



Diagnostics page

2" SMIS MULTI-FUNCTION GAUGE



Fuel manager page



990C0-88150-000 002

with a gray bezel + a T-connector (990C0-88110-000) + Operation & Installation Manual

Examples of display**



as a volt meter for single engine



Engine trim page as a trim gauge for single engine



Fuel manager page

** The detail instructions of display-operation are explained in the Operation & Installation Manual.

GAUGE KIT

4" GAUGE KIT



990C0-88163-KIT 003

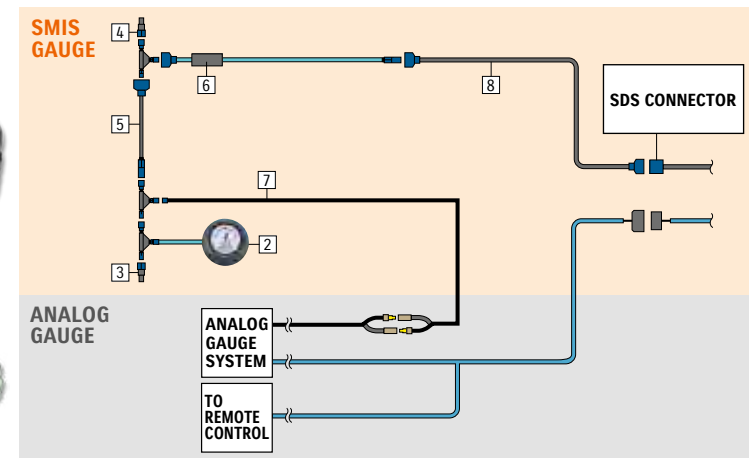
This kit contains basic components to install digital gauge.

2" GAUGE KIT



990C0-88153-KIT 004 34011-89L00-000

This kit supplements analog gauges to display additional information, and it can display information which analog gauge system cannot indicate such as fuel consumption. 34011-89L00-000 is for DF9.9B/15A/20A/25A/30A and includes 36660-89L01-000 instead of 990C0-88136-000.



Available for your convenience. Refer to the following chart for the contents.

Contents		quantity				
part name	part number	4" Gauge Kit 990C0-88163-KIT 003		2" Gauge Kit 990C0-88153-KIT 004		
			***	990C0-88153-KIT 004	***	
1	4" SMIS Multi-Function Gauge	990C0-88161-000 001	1	1	-	-
2	2" SMIS Multi-Function Gauge	990C0-88150-000 002	-	-	1	1
3	Terminator Female	990C0-88113-000 011	1	-	1	-
4	Terminator Male	990C0-88114-000 012	1	-	1	-
5	Extension Cable 25 feet	990C0-88108-000	-	-	1	-
6	Engine Interface Unit	990C0-88148-000 005	1	1	1	1
7	SMIS Power Cable	990C0-88112-000 008	1	1	1	1
8	SMIS Adapter	990C0-88136-000 006 OR 36660-89L01-000	-	-	1	-
9	Operation & Installation Manual for 4" Gauge		1	-	-	-
10	Operation & Installation Manual for 2" Gauge		-	-	1	-

***Quantity of T-connector(s) in a kit

OPTIONAL INSTRUMENT TRIM

Change the standard gray bezel to suit your application. Two different bezel finishes are available for 2" or 4" Multi-Function gauges.



The image shows 4" bezel, "chrome", 990C0-88021-6PK.



4" bezel, chrome
990C0-88021-6PK

	Chrome	White
4" bezel	990C0-88021-6PK	990C0-88023-6PK
2" bezel	990C0-88025-6PK	990C0-88027-6PK

COMPONENT OF SUZUKI MODULAR INSTRUMENT SYSTEM

ENGINE INTERFACE The most important part of the SMIS data system. DF150TG/ZG/175TG/ZG/200AP/250AP/300AP connect to the system, using Engine Interface Adapter.

ENGINE INTERFACE UNIT WITH A T-CONNECTOR



990C0-88148-000 005

SMIS ADAPTER



990C0-88136-000 006
for DF40A-250 with analog gauge system to add on digital gauges.1.8m

ENGINE INTERFACE ADAPTER



36661-98J20-000 007
for dual DF150TG/ZG/175TG/ZG/200AP 250AP/300AP

36661-98J10-000 007
for single DF150TG/ZG/175TG/ZG/200AP 250AP/300AP

36661-98J30-000 007
for triple DF150TG/ZG/175TG/ZG/200AP 250AP/300AP

POWER CABLE The fused (3A) lead connects the extension cable to the power source.

SMIS POWER CABLE WITH A T-CONNECTOR



990C0-88112-000 008

POWER NODE WITH A T-CONNECTOR



990C0-88130-000 009
Allows network to be powered from multiple power sources (key switch, accessory switch, etc...) For multiple (2 or 3) engines of DF9.9B-250

CONNECTION HARDWARE

T-CONNECTOR



990C0-88110-000 010
T-connectors link all compatible cables, data and sensor devices and can be easily secured.

TERMINATOR FEMALE



990C0-88113-000 011
120-ohm terminators are required for any open cable ends in the system.

TERMINATOR MALE



990C0-88114-000 012
120-ohm terminators are required for any open cable ends in the system.

ADAPTER HARNESS TO N NETWORK



990C0-88029-000 013
(Black network to Blue devices)
Allows connection to other NMEA devices (Device NET).

ADAPTER HARNESS TO L NETWORK



990C0-88137-000 014
(Blue network to Black devices)

SENSORS

FLUID LEVEL SENSOR WITH A T-CONNECTOR



990C0-88116-000 015

Monitors the fluid levels such as fuel, live well water level, etc. 10ft cable.

SPEED SENSOR WITH A T-CONNECTOR



990C0-88117-000 016

Paddle wheel-type speed sensor. 10ft cable.

WATER PRESSURE SENSOR WITH A T-CONNECTOR



990C0-88139-000 017

WATER TEMPERATURE SENSOR WITH A T-CONNECTOR



990C0-88118-000 018

Surface-water temperature sensor. 10ft cable.

990C0-88119-000

(Thru-Hull type)

GPS RECEIVER MODULE WITH A T-CONNECTOR



990C0-88120-000 019

Displays the accurate location and speed on multi-function gauges.

CONNECTION CABLE

The extension cable is the main line of SMIS. Data communication runs the length of the boat, capped at each end with a 120-ohm terminator. NMEA2000® compatible sensors or other devices can be added by the use of T-connectors throughout the system.

EXTENSION CABLE

990C0-88104-000

2 feet

36662-88L30-000

15 feet

990C0-88105-000 020

6 feet

990C0-88108-000

25 feet



CONNECTION FOR SUZUKI MODULAR INSTRUMENT SYSTEM

Example of Connection for DF150TG/ZG/175TG/ZG/200AP/250AP/300AP with S.M.I.S. Gauge

(in case of equipping the same quantities of 4" and 2" gauges as engines and stations and all optional items)

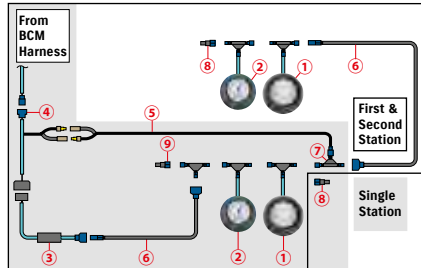
NOTE: (*1): The required or recommended quantities are shown. Numbers in round-parentheses show the required ones if equipped.

(*2): While some of SMIS items have a T-connector in the package, the total number of the T-connectors enclosed in them may be short to the required quantity.

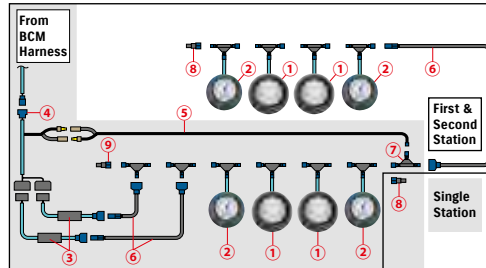
(*3): SMIS adapter is required only for DF9.9B/15A/20A and DF25A/30A.

category	Ref. #	part name	Number of T-connector Included	Contents of Gauge Kit		engine(s)											part number	
				4"	2"	1			2			3						
						station(s)												
						1	1	1	2	1st	2nd	2	1st	2nd	2	1st		2nd
						required quantity per boat (*1)												
SMIS multi-function gauge	①	4" SMIS Multi-Function Gauge with a gray bezel	1	1		1	2	3	2	1	1	4	2	2	6	3	3	990C0-88161-000
		4" Gauge Kit	3															990C0-88163-KIT
engine interface	②	2" SMIS Multi-Function Gauge with a gray bezel	1		1	1	2	3	2	1	1	4	2	2	6	3	3	990C0-88150-000
		③	Engine Interface unit	1	1	1	1	1	1	1	2	2	3	3				990C0-88148-000
			④	Engine Interface Adapter for single	0													
		Engine Interface Adapter for dual	0								1	1					36661-98J20-000	
		Engine Interface Adapter for triple	0												1	1		36661-98J30-000
power cable	⑤	Power Cable	1	1	1	1	1	1	1	1	1	1	1	1	1	1		990C0-88112-000
connection cable	⑥	Extension Cable 2 feet	0															990C0-88104-000
		Extension Cable 6 feet	0														990C0-88105-000	
		Extension Cable 15 feet	0															36662-88L30-000
		Extension Cable 25 feet	0	0	1													990C0-88108-000
connection hardware	⑦	T-Connector (*2)	1	3	3	4 (*2)	7 (*2)	10 (*2)	6 (*2)	4	2	11 (*2)	7	4	16 (*2)	10	6	990C0-88110-000
	⑧	Terminator Female	0	1	1	1	1	1	1	1	1	1	1	1	1	1	1	990C0-88113-000
	⑨	Terminator Male	0	1	1	1	1	1	1	1	1	1	1	1	1	1	1	990C0-88114-000
		Adapter Harness to N network (Black network to Blue devices)	0															990C0-88029-000
		Adapter Harness to L network (Blue network to Black devices)	0															990C0-88137-000
sensor		Fluid Level Sensor	1			(1)	(1)	(1)	(1)			(1)			(1)			990C0-88116-000
		Speed Sensor	1			(1)	(1)	(1)	(1)			(1)			(1)			990C0-88117-000
		Water Temperature Sensor	1			(1)	(1)	(1)	(1)			(1)			(1)			990C0-88118-000
		Water Temperature Sensor (Thru-Hull type)	1			(1)	(1)	(1)	(1)			(1)			(1)			990C0-88119-000
		Water Pressure Sensor	1			(1)	(1)	(1)	(1)			(1)			(1)			990C0-88139-000
		GPS Receiver Module	1			(1)	(1)	(1)	(1)			(1)			(1)			990C0-88120-000
optional trim		4" bezel, chrome	0															990C0-88021-6PK
		4" bezel, white	0															990C0-88023-6PK
		2" bezel, chrome	0															990C0-88025-6PK
		2" bezel, white	0															990C0-88027-6PK

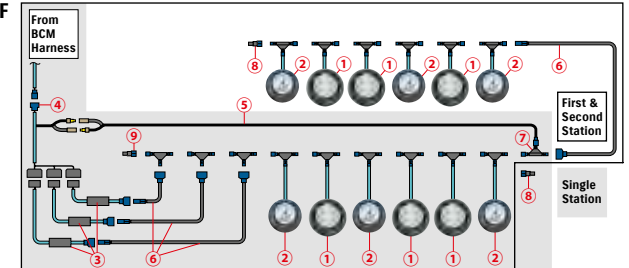
SINGLE ENGINE
DF150TG/ZG/
175TG/ZG/
200AP/250AP/
300AP



DUAL ENGINE OF
DF150TG/ZG/
175TG/ZG/
200AP/250AP/
300AP



TRIPLE ENGINE OF
DF150TG/ZG/
175TG/ZG/
200AP/250AP/
300AP

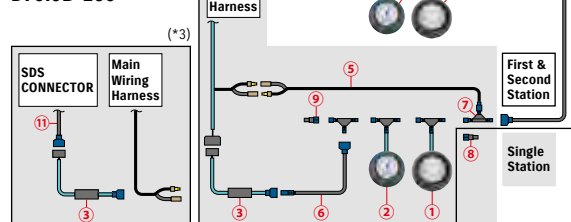


Example of Connection for DF9.9B-250 with S.M.I.S. Gauge

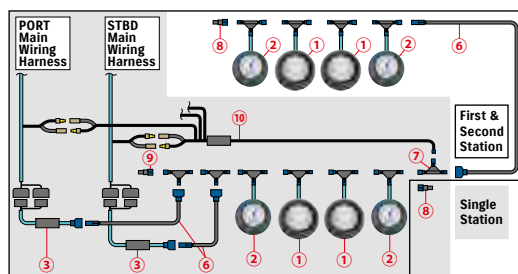
(in case of equipping the same quantities of 4" and 2" gauges as engines' and stations' and all optional items)

category	Ref. #	part name	Number of T-connector Included	Contents of Gauge Kit		engine(s)										part number		
				4"	2"	1			2			3						
						station(s)												
						1	1	1	2 total	1st	2nd	2 total	1st	2nd	2 total		1st	2nd
						required quantity per boat (*1)												
SMIS multi-function gauge	①	4" SMIS Multi-Function Gauge with a gray bezel	1	1		1	2	3	2	1	1	4	2	2	6	3	3	990C0-88161-000
		4" Gauge Kit	3	KIT														990C0-88163-KIT
	②	2" SMIS Multi-Function Gauge with a gray bezel	1		1													990C0-88150-000
engine interface	③	Engine Interface unit	1	1	1													990C0-88148-000
power cable	⑤	Power Cable	1	1	1							1	1		1	1		990C0-88112-000
	⑩	Power Node for multiple engine of DF40-250 only	1									1	1		1	1		990C0-88130-000
connection cable		Extension Cable 2 feet	0															990C0-88104-000
		Extension Cable 6 feet	0															990C0-88105-000
	⑥	Extension Cable 15 feet	0															36662-88L30-000
		Extension Cable 25 feet	0	0	1													990C0-88108-000
connection hardware	⑦	T-Connector (*2)	1	3	3	4 (*2)	7 (*2)	10 (*2)	6 (*2)	4	2	11 (*2)	7	4	16 (*2)	10	6	990C0-88110-000
	⑧	Terminator Female	0	1	1	1	1	1	1	1	1	1	1	1	1	1	1	990C0-88113-000
	⑨	Terminator Male	0	1	1	1	1	1	1	1	1	1	1	1	1	1	1	990C0-88114-000
		Adapter Harness to N network (Black network to Blue devices)	0															990C0-88029-000
		Adapter Harness to L network (Blue network to Black devices)	0															990C0-88137-000
sensor		Fluid Level Sensor	1			(1)	(1)	(1)	(1)			(1)			(1)			990C0-88116-000
		Speed Sensor	1			(1)	(1)	(1)	(1)			(1)			(1)			990C0-88117-000
		Water Temperature Sensor	1			(1)	(1)	(1)	(1)			(1)			(1)			990C0-88118-000
		Water Temperature Sensor (Thru-Hull type)	1			(1)	(1)	(1)	(1)			(1)			(1)			990C0-88119-000
		Water Pressure Sensor	1			(1)	(1)	(1)	(1)			(1)			(1)			990C0-88139-000
		GPS Receiver Module	1			(1)	(1)	(1)	(1)			(1)			(1)			990C0-88120-000
optional trim		4" bezel, chrome	0															990C0-88021-6PK
		4" bezel, white	0															990C0-88023-6PK
		2" bezel, chrome	0															990C0-88025-6PK
		2" bezel, white	0															990C0-88027-6PK
adapter cable	⑪	SMIS adapter (*3)	0			1	2	3	1	1	2	2		3	3		36660-89L01-000	

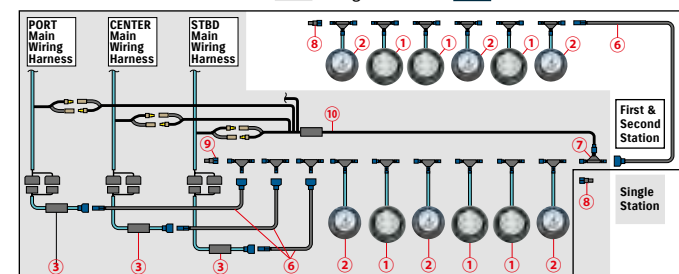
SINGLE ENGINE OF DF9.9B-250



DUAL ENGINE OF DF9.9B-250



TRIPLE ENGINE OF DF9.9B-250



ANALOG INSTRUMENT

Caution lamp	Caution type
CHECK ENGINE	Low battery-voltage or Other cautions on S.D.S
TEMP	Overheat (Over-revolution)

Caution lamp	Caution type
OIL	Low oil-pressure (Over-revolution)
REV LIMIT	Oil change reminder
	Over-revolution

TACHOMETER



White



Black

34200-93J12-000 (White) 021 **34200-93J00-000** (Black) 022

Gauge Size 4"

Applicable Model DF25A-250

Caution systems alert with a monitor lamp lighting on when an abnormal engine condition occurs. Refer to SERVICE MANUAL for the detail.



White



Black

34200-93J51-000 (White) 023 **34200-93J40-000** (Black) 024

Gauge Size 4"

Applicable Model DF40A-140/200A

Exclusive for SUZUKI Troll Mode System. Automatically switches to low RPM scale when the SUZUKI Troll Mode System is activated.



White



Black

34200-93J32-000 (White) 025 **34200-93J20-000** (Black) 026

Gauge Size 4"

Applicable Model DF8-30A, DT30/40W

Full-scale 7000-RPM TACHOMETER can be used on electric-start models by using 4, 6 or 12 pole switch on rear of meter.

TRIM GAUGE



White



Black

34800-93J11-000 (White) 027

34800-93J00-000 (Black) 028

Gauge Size 2"

Applicable Model DF25A-250

Magnetic-type gauge shows trim angle for optimum performance and efficiency.

FUEL GAUGE



White



Black

34300-93J11-000 (White) 029

34300-93J00-000 (Black) 030

Gauge Size 2"

Applicable Model DF8A-250, DT30/40

FUEL GAUGE alone works with the US Standard 250Q sending unit. Use the 150Q adaptor to connect the gauge to a European standard sending unit.

HOUR METER



White



Black

34500-93J11-000 (White) 031

34500-93J00-000 (Black) 032

Gauge Size 2"

Applicable Model DF8A-250, DT30/40

12-volt-electric-motor-driven meter indicates hours that your outboard motor has been operated in order for you to know when each periodic service is required.

VOLTMETER



White



Black

34600-93J11-000 (White) 033

34600-93J00-000 (Black) 034

Gauge Size 2"

Applicable Model DF8A-250, DT30/40

To help your SUZUKI OUTBOARD MOTOR run at its best, monitor the charging system functioning with a VOLTMETER.

WATER-PRESSURE GAUGE



White



Black

34650-93J31-000 (White) 035

34650-93J20-000 (Black) 036

Gauge Size 2"

Applicable Model DF40A-250

Bourdon-tube type gauge measures cooling-water pressure. Select an appropriate INSTALLATION KIT for each model.

SPEEDOMETER



White

34100-93J11-000 037

Gauge Size 4"

Maximum Speed 130km/h, 80mph

Bourdon-tube type speedometer with readings in km/h and mph. Includes vinyl tube, hardware and installation manual.



Black

34100-93J00-000 038



White

34100-93J31-000 039

Gauge Size 4"

Maximum Speed 80km/h, 50mph

Bourdon-tube type speedometer with readings in km/h and mph. Includes vinyl tube, hardware and installation manual.



Black

34100-93J20-000 040



White

34100-93J51-000 041

Gauge Size 4"

Maximum Speed 80km/h, 45knots

Bourdon-tube type speedometer with readings in km/h and knots. Includes vinyl tube, hardware and installation manual.



Black

34100-93J40-000 042



34100-93J60-000 043

Gauge Size 4"

Background White

Maximum Speed 120km/h, 65knots

Bourdon-tube type speedometer with readings in km/h and knots. Includes vinyl tube, hardware and installation manual.

SPEEDOMETER SENDER ASSY



34190-95500-000 044

Applicable Model DF9.9BT-20AT/25R/40AT-300AP, DT30R/40WR



34190-87D00-000 045

Applicable Model DF9.9BT-20AT/25R/40AT-140AT/Z/150T/Z/175T/Z/200T/Z-250T/Z, DT30R/40WR

INSTALLATION KIT for WATER-PRESSURE GAUGE



34660-90J02-000

Applicable Model DF40A-140A

34660-93J00-000 046

Applicable Model DF200-250

KIT includes fittings and hoses needed for motor to gauge connection.

34660-96J00-000

Applicable Model DF150-175/200A

ELECTRONIC THROTTLE AND SHIFT SYSTEM

- Computerized Drive by Wire system of the Suzuki Precision Control (S.P.C.) eliminates wiring friction losses and allows smooth and superior handling. As a result, SPC makes smooth and linear control from start and at low speed.
- By the control panel operation (included remote-control kits), you can start and stop the engine and change a steering station with multiple engines you can control the synchronization of an engine rev and change the tilt angles.
- Not only DF300AP/250AP/200AP, but also DF150TG/ZG, DF175TG/ZG are suitable for this system.
- Chrome plating finish for better rust resistance.
- applicable to maximum 2 station and maximum 4 engines.
- 8 kinds of rigging parts kits are available for your convenience to select all necessary parts for your requirements.



67200-98J03-000
BINNACLE MOUNT R/C BOX
for SINGLE ENGINE **047**



67200-98J22-000
FLUSH MOUNT R/C BOX
for SINGLE ENGINE **048**



67200-98J13-000
BINNACLE MOUNT R/C BOX
for DUAL ENGINE **049**

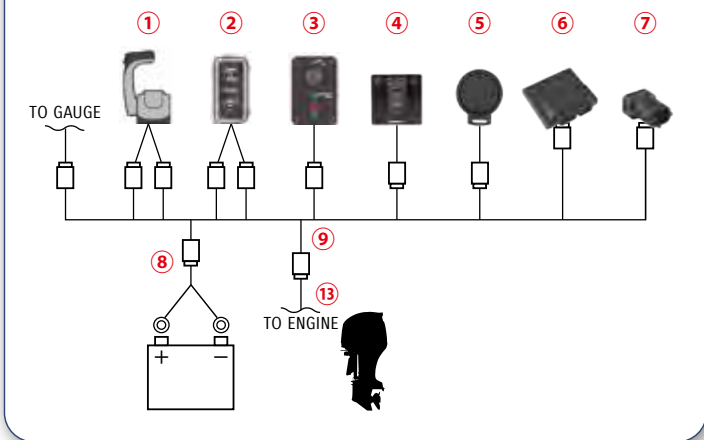
REMOTE-CONTROL KIT for SINGLE ENGINE				KIT			Total Required Quantity	
				1st Station		2nd Station		
PART NUMBER	PART NAME	LENGTH	67000-98J09-000 BINNACLE-MOUNT CONTROL KIT	67000-98J68-000 FLUSH-MOUNT CONTROL KIT	67000-98J19-000 2ND-STATION CONTROL KIT	SINGLE STATION	DUAL STATION	
① 67200-98J03-000 047	BINNACLE MOUNT R/C BOX		1	—	1	1	2	
67200-98J22-000 048	FLUSH MOUNT R/C BOX		—	1	—	—	—	
② 37100-98J11-000 051	CONTROL PANEL		1	1	1	1	2	
③ 37100-98J04-000 050	MAIN SWITCH PANEL		1	1	—	1	1	
④ 37860-87L00-000 080	TROLL MODE SWITCH PANEL		1	1	1	1	2	
⑤ 38500-93J90-000 082	WARNING BUZZER		1	1	1	1	2	
09407-08401-000	WARNING-BUZZER CLAMP		1	1	1	1	2	
36770-98J10-000 054	BOAT CONTROL MODULE		1	1	1	1	2	
36775-98J00-000 055	BCM HOLDER (L)		1	1	1	1	2	
⑥ 36776-98J00-000 056	BCM HOLDER (R)		1	1	1	1	2	
33911-88BLO-000 057	BCM-CONNECT CAP		1	1	1	1	2	
33925-93J00-000 058	BCM CUSHION		1	1	1	1	2	
⑦ 33926-98J00-000 064	TERMINAL RESISTOR		2	2	—	2	2	
⑧ 36625-98J10-000 063	BATTERY-LEAD		1	1	—	1	1	
⑨ 36623-98J20-000 065	BCM #1 WIRING HARNESS		1	1	—	1	1	
⑩ 36622-98J00-000 062	DUAL-STATION WIRING HARNESS		—	—	1	—	1	
⑪ 36624-98J02-000 066	BCM #2 WIRING HARNESS		—	—	1	—	1	
⑫ 37803-93J04-000 076	EMERGENCY SWITCH PANEL		—	—	1	—	1	
— 09403-13402-000	HARNES CLAMP		10	10	10	—	—	
* ⑬ 36620-98J30-000 059	MAIN WIRING HARNESS	6.5m	—	—	—	1	2	
36620-98J40-000		9.5m	—	—	—	—	—	
36620-98J50-000 060	MAIN WIRING HARNESS EXTENSION	2.0m	—	—	—	—	—	

*⑬ is not included these kits. Please purchase these items separately

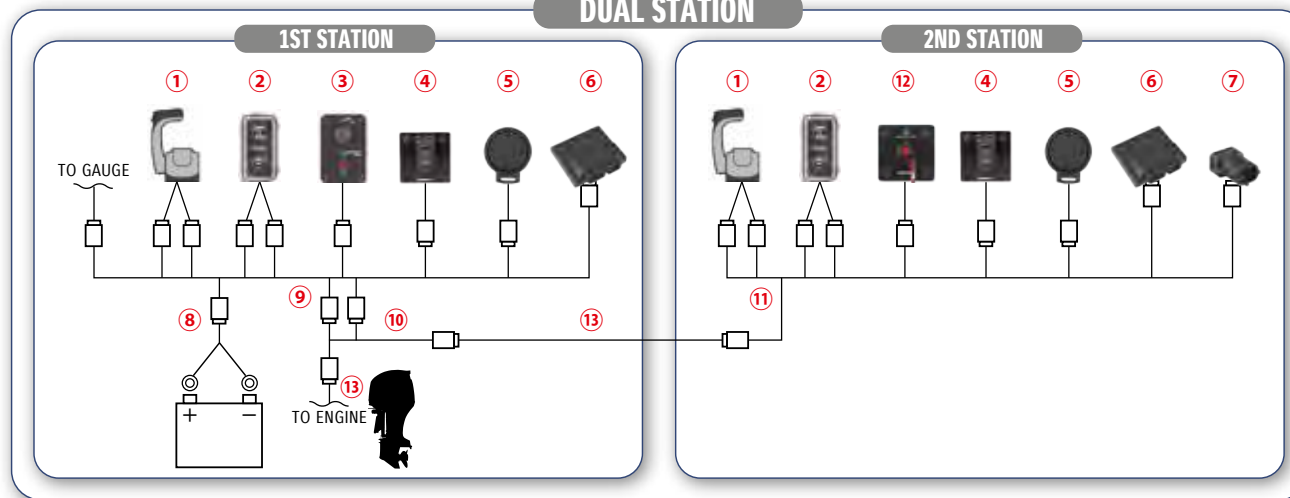
REMOTE-CONTROL KIT for DUAL ENGINE				KIT		Total Required Quantity	
				1st Station	2nd Station		
PART NUMBER	PART NAME	LENGTH	67000-98J29-000 BINNACLE-MOUNT CONTROL KIT	67000-98J39-000 2ND-STATION CONTROL KIT	SINGLE STATION	DUAL STATION	
① 67200-98J13-000 049	BINNACLE MOUNT R/C BOX		1	1	1	2	
② 37100-98J21-000 052	CONTROL PANEL		1	1	1	2	
③ 37100-98J04-000 050	MAIN SWITCH PANEL		1	1	1	1	
④ 37860-87L00-000 080	TROLL MODE SWITCH PANEL		1	1	1	2	
⑤ 38500-93J90-000 082	WARNING BUZZER		1	1	1	2	
09407-08401-000	WARNING-BUZZER CLAMP		1	1	1	2	
36770-98J10-000 054	BOAT CONTROL MODULE		1	1	1	2	
36775-98J00-000 055	BCM HOLDER (L)		1	1	1	2	
⑥ 36776-98J00-000 056	BCM HOLDER (R)		1	1	1	2	
33911-88BLO-000 057	BCM-CONNECT CAP		1	1	1	2	
33925-93J00-000 058	BCM CUSHION		1	1	1	2	
⑦ 33926-98J00-000 064	TERMINAL RESISTOR		2	—	2	2	
⑧ 36625-98J10-000 063	BATTERY-LEAD		1	—	1	1	
⑨ 36623-98J30-000	BCM #1 WIRING HARNESS		1	—	1	1	
⑩ 36622-98J00-000 062	DUAL-STATION WIRING HARNESS		—	1	—	1	
⑪ 36624-98J11-000	BCM #2 WIRING HARNESS		—	1	—	1	
⑫ 37803-93J04-000 076	EMERGENCY SWITCH PANEL		—	1	—	1	
— 36621-98J00-000 061	ENGINE WIRING HARNESS		1	—	1	1	
— 09403-13402-000	HARNES CLAMP		15	10	—	—	
* ⑬ 36620-98J30-000 059	MAIN WIRING HARNESS	6.5m	—	—	—	2	
36620-98J40-000		9.5m	—	—	—	—	
36620-98J50-000 060	MAIN WIRING HARNESS EXTENSION	2.0m	—	—	—	—	

*⑬ is not included these kits. Please purchase these items separately

SINGLE STATION



DUAL STATION



REMOTE-CONTROL KIT for TRIPLE ENGINE

	PART NUMBER	PART NAME	LENGTH	KIT		Total Required Quantity	
				1st Station 67000-98J48-000 BINNACLE-MOUNT OR FLUSH-MOUNT CONTROL KIT	2nd Station 67000-98J58-000 2ND-STATION CONTROL KIT	SINGLE STATION	DUAL STATION
①	67200-98J13-000	049 BINNACLE MOUNT R/C BOX		1	1	1	2
②	37100-98J31-000	053 CONTROL PANEL		1	1	1	2
③	37100-98J04-000	050 MAIN SWITCH PANEL		1	-	1	1
④	37860-87L00-000	080 TROLL MODE SWITCH PANEL		1	1	1	2
⑤	38500-93J90-000	082 WARNING BUZZER		1	1	1	2
	09407-08401-000	WARNING-BUZZER CLAMP		1	1	1	2
	36770-98J10-000	054 BOAT CONTROL MODULE		1	1	1	2
	36775-98J00-000	055 BCM HOLDER (L)		1	1	1	2
⑥	36776-98J00-000	056 BCM HOLDER (R)		1	1	1	2
	33911-88BLO-000	057 BCM-CONNECT CAP		1	1	1	2
	33925-93J00-000	058 BCM CUSHION		1	1	1	2
⑦	33926-98J00-000	064 TERMINAL RESISTOR		2	-	2	2
⑧	36625-98J10-000	063 BATTERY-LEAD		1	-	1	1
⑨	36623-98J30-000	BCM #1 WIRING HARNESS		1	-	1	1
⑩	36622-98J00-000	062 DUAL-STATION WIRING HARNESS		-	1	-	1
⑪	36624-98J11-000	BCM #2 WIRING HARNESS		-	1	-	1
⑫	37803-93J04-000	076 EMERGENCY SWITCH PANEL		-	1	-	1
-	36621-98J00-000	061 ENGINE WIRING HARNESS		1	-	1	1
-	09403-13402-000	HARNESS CLAMP		18	10	-	-
* ⑬	36620-98J30-000	059 MAIN WIRING HARNESS	6.5m			1	2
	36620-98J40-000	9.5m					
	36620-98J50-000	060 MAIN WIRING HARNESS EXTENSION	2.0m			-	-

* ⑬ is not included these kits. Please purchase these items separately

REMOTE-CONTROL KIT for QUADRUPLE ENGINE

	PART NUMBER	PART NAME	LENGTH	KIT		Total Required Quantity	
				1st Station 67000-98J70-000 BINNACLE-MOUNT OR FLUSH-MOUNT CONTROL KIT	2nd Station 67000-98J80-000 2ND-STATION CONTROL KIT	SINGLE STATION	DUAL STATION
①	67200-98J13-000	049 BINNACLE MOUNT R/C BOX		1	1	1	2
②	37100-98J21-000	052 CONTROL PANEL		2	2	2	4
③	37100-98J04-000	050 MAIN SWITCH PANEL		1	-	1	1
④	37860-87L00-000	080 TROLL MODE SWITCH PANEL		1	1	1	2
⑤	38500-93J90-000	082 WARNING BUZZER		2	2	2	4
	09407-08401-000	WARNING-BUZZER CLAMP		2	2	2	4
	36770-98J20-000	BOAT CONTROL MODULE		2	2	2	4
	36775-98J00-000	055 BCM HOLDER (L)		2	2	2	4
⑥	36776-98J00-000	056 BCM HOLDER (R)		2	2	2	4
	33911-88BLO-000	057 BCM-CONNECT CAP		2	2	2	4
	33925-93J00-000	058 BCM CUSHION		2	2	2	4
⑦	33926-98J00-000	064 TERMINAL RESISTOR		4	-	4	4
⑧	36625-98J10-000	063 BATTERY-LEAD		2	-	2	2
⑨	36623-98J40-000	BCM #1 WIRING HARNESS		1	-	1	1
⑩	36622-98J00-000	062 DUAL-STATION WIRING HARNESS		-	2	-	2
⑪	36623-98J40-000	BCM #2 WIRING HARNESS		-	1	-	1
⑫	37803-93J04-000	076 EMERGENCY SWITCH PANEL		-	1	-	1
-	36621-98J00-000	061 ENGINE WIRING HARNESS		2	-	2	2
-	09403-13402-000	HARNESS CLAMP		20	15	-	-
* ⑬	36620-98J30-000	059 MAIN WIRING HARNESS	6.5m			2	4
	36620-98J40-000	9.5m					
	36620-98J50-000	060 MAIN WIRING HARNESS EXTENSION	2.0m			-	-

* ⑬ is not included these kits. Please purchase these items separately

COMPONENT OF SUZUKI PRECISION CONTROL

Applicable model

MAIN SWITCH PANEL



37100-98J04-000

050

Single ignition with Emergency-stop switch

CONTROL PANEL



37100-98J11-000

051

for Single-Engine



37100-98J21-000

052

for Dual-Engine



37100-98J31-000

BOAT CONTROL MODULE (BCM)



36770-98J10-000

054

36770-98J20-000

for Quadruple engines

BCM HOLDER (L/R)



(L) 055

(R) 056

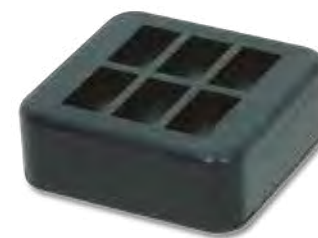
36775-98J00-000

055

36776-98J00-000

056

BCM-CONNECT CAP



33911-88BLO-000

057

BCM CUSHION



33925-93J00-000

058

MAIN WIRING HARNESS



36620-98J30-000 059
6.5 meters for control system

36620-98J40-000
9.5 meters for control system

MAIN-WIRING-HARNESS EXTENSION



36620-98J50-000 060
2.0 meters for control system

ENGINE WIRING HARNESS



36621-98J00-000 061
for Dual engines

36621-98J10-000
for Triple engines

DUAL-STATION WIRING HARNESS



36622-98J00-000 062
for Dual-station control system

BATTERY LEAD



36625-98J10-000 063
6.5 meters

TERMINAL RESISTOR



33926-98J00-000 064

BCM #1 WIRING HARNESS



36623-98J20-000 065
for Single engine and Single (First) station

36623-98J30-000
for Dual or Triple engines and Single (First) station

36623-98J40-000
for Quadruple engines

BCM #2 WIRING HARNESS



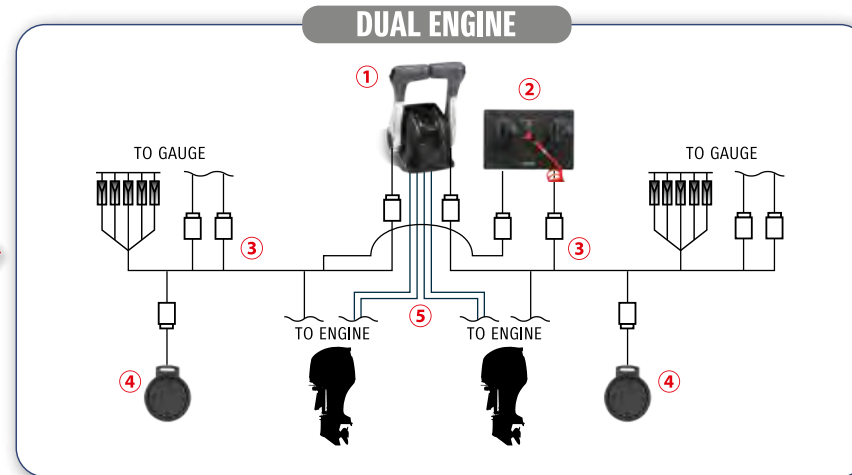
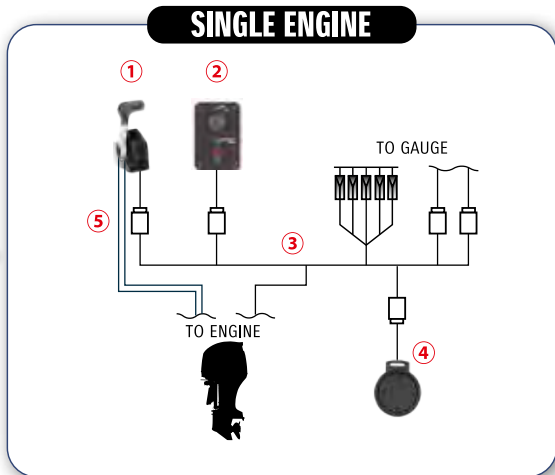
36624-98J02-000 066
for Single engine and Second station

36624-98J11-000
for Dual or Triple engines and Second station

36623-98J40-000
for Quadruple engines and Second station



MECHANICAL REMOTE CONTROL SYSTEM



REMOTE-CONTROL KIT for SINGLE ENGINE + SINGLE STATION				KIT					Total Required Quantity
PART NUMBER	PART NAME	LENGTH	1st Station	1st Station	1st Station	1st Station	1st Station		
			67000-93J05-000 BINNACLE-MOUNT CONTROL KIT	67000-93J49-000 BINNACLE-MOUNT CONTROL KIT	67000-93J26-000 FLUSH-MOUNT CONTROL KIT	67000-93J90-000 FLUSH-MOUNT CONTROL KIT	67000-93J80-000 SIDE-MOUNT CONTROL KIT		
① 67200-93J13-000 067	BINNACLE MOUNT R/C BOX		1	1	—	—	—	1	
67200-93J32-000 069	FLUSH MOUNT R/C BOX		—	—	1	1	—	1	
67200-93J50-000	SIDE MOUNT R/C BOX		—	—	—	—	1	1	
37803-93J04-000 076	EMERGENCY SWITCH PANEL		—	—	—	—	—	—	
37803-99E04-000	EMERGENCY SWITCH PANEL		—	—	—	—	—	1	
37100-96J00-000 075	IGNITION SWITCH PANEL		—	—	—	—	—	—	
37100-96J24-000 077	SINGLE IGNITION WITH E/S SWITCH		1	1	1	1	※1	—	
36620-93J02-000 073	MAIN WIRING HARNESS	6.5m	—	1	—	1	1	—	
36620-93J52-000		5.0m	—	—	—	—	—	1	
36620-93J62-000		8.0m	—	—	—	—	—	—	
36620-94J01-000		6.5m	—	—	—	—	—	—	
34200-93J12-000 021	TACHOMETER (FACE : WHITE)		—	1	—	1	1	—	
34800-93J11-000 027	TRIM GAUGE (FACE : WHITE)		—	1	—	1	1	—	
④ 38500-93J90-000 082	WARNING BUZZER		—	—	—	—	※1	1	
09407-08401-000	WARNING-BUZZER CLAMP		—	—	—	—	※1	1	
67320-93J00-000 084	R/C CABLE (FOR THROTTLE AND SHIFT CABLES)	8ft. / 2.44m	—	—	—	—	—	2	
67320-93J10-000		10ft. / 3.05m	—	—	—	—			
67320-93J20-000		12ft. / 3.66m	—	—	—	—			
67320-93J30-000		14ft. / 4.27m	—	—	—	—			
67320-93J40-000		16ft. / 4.88m	—	—	—	—			
67320-93J50-000		18ft. / 5.49m	—	—	—	—			
67320-93J60-000		20ft. / 6.10m	—	—	—	—			
67320-93J70-000		22ft. / 6.71m	—	—	—	—			
67320-93J80-000	24ft. / 7.32m	—	—	—	—				
36620-93J10-000	MAIN WIRING HARNESS EXTENSION	2m	—	—	—	—	—		
36620-93J40-000		3m	—	—	—	—			
37860-87L00-000 080	TROLL MODE SWITCH PANEL		—	—	—	—	※2	—	

REMOTE-CONTROL KIT for DUAL ENGINE + SINGLE STATION				KIT			Total Required Quantity
PART NUMBER	PART NAME	LENGTH	1st Station	1st Station	1st Station		
			990C0-93J14-000 BINNACLE-MOUNT CONTROL KIT	67000-93J14-000 BINNACLE-MOUNT CONTROL KIT	—		
① 67200-93J23-000 068	BINNACLE MOUNT R/C BOX		1	1	—	1	
② 37100-96J14-000 078	DUAL IGNITION WITH E/S SWITCH		1	1	—	1	
36620-93J02-000 073	MAIN WIRING HARNESS	6.5m	—	—	2	2	
36620-93J52-000		5.0m	—	—	—		
36620-93J62-000		8.0m	—	—	—		
36620-94J01-000		6.5m	—	—	—		
34200-93J12-000 021	TACHOMETER (FACE : WHITE)		—	—	2	—	
34800-93J11-000 027	TRIM GAUGE (FACE : WHITE)		—	—	2	—	
④ 38500-93J90-000 082	WARNING BUZZER		—	—	—	2	
09407-08401-000	WARNING-BUZZER CLAMP		—	—	—	2	
67320-93J00-000 084	R/C CABLE (FOR THROTTLE AND SHIFT CABLES)	8ft. / 2.44m	—	—	—	4	
67320-93J10-000		10ft. / 3.05m	—	—	—		
67320-93J20-000		12ft. / 3.66m	—	—	—		
67320-93J30-000		14ft. / 4.27m	—	—	—		
67320-93J40-000		16ft. / 4.88m	—	—	—		
67320-93J50-000		18ft. / 5.49m	—	—	—		
67320-93J60-000		20ft. / 6.10m	—	—	—		
67320-93J70-000		22ft. / 6.71m	—	—	—		
67320-93J80-000	24ft. / 7.32m	—	—	—			
36620-93J10-000	MAIN WIRING HARNESS EXTENSION	2m	—	—	—	—	
36620-93J40-000		3m	—	—	—		
37860-87L00-000 080	TROLL MODE SWITCH PANEL		—	—	—	※2	

These accessories in yellow painted are optional ones. Please select your best one depending on your rigging system.

※1 The side mount control box is equipped with an ignition switch, an emergency switch and warning buzzer with clamp.

※2 For more accurate speed control, please purchase the TACHOMETER (34200-93J50(40)) separately.

BINNACLE-MOUNT REMOTE CONTROL BOX



67200-93J13-000 067
Single-engine
Applicable Model DF8A-250



67200-93J23-000 068
Dual-engine
Applicable Model DF8A-250

FLUSH-MOUNT REMOTE CONTROL BOX



67200-93J32-000 069
Single-engine
Applicable Model DF8A-250

SIDE-MOUNT REMOTE CONTROL BOX



67200-91J20-000
Single-engine
Applicable Model DF4-6

67200-94J20-000 070
Single-engine with warning buzzer
Applicable Model DF8A-30A

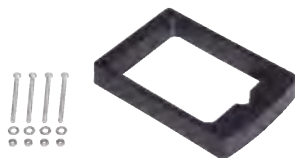
67200-93J50-000
Single-engine with PTT switch
Applicable Model DF9.9B-250

67200-89E40-000
Single-engine with warning buzzer
Applicable Model DT30/40W

SPACER KIT for REMOTE CONTROL BOX



67500-93J00-000 071
for Single Binnacle-mount type
Applicable Model DF8A-250



67500-93J10-000 072
for Dual Binnacle-mount type
Applicable Model DF8A-250

CONNECTION between ENGINE and CONTROL SYSTEM

MAIN WIRING HARNESS



36620-93J52-000
5.0 meters for Control system
Applicable Model DF40A-250

36620-93J02-000 073
6.5 meters for Control system
Applicable Model DF40A-250

36620-93J62-000
8.0 meters for Control system
Applicable Model DF40A-250

36620-94J01-000
6.5 meters for Control system without
Monitor-signal wire,
Trim-sender wire and PTT-SW wire
Applicable Model DF8A/9.9B/15A/20A

36620-94L10-000
5.0 meters for Control system without
Trim-sender wire and PTT-SW wire
Applicable Model DF25A/30A

MAIN WIRING HARNESS EXTENSION

36620-93J10-000
2.0 meters for Control system
Applicable Model DF9.9B-250

36620-93J40-000
3.0 meters for Control system
Applicable Model DF9.9B-250

BATTERY LEAD



36625-93J10-000 074
6.7 meters
Applicable Model DF70-90A/150/175/200A/
200-250

36625-93J00-000
3.9 meters
Applicable Model DF70-90A/150/175/200A/
200-250

COMPONENT OF MECHANICAL REMOTE CONTROL SYSTEM

IGNITION SWITCH PANEL



37100-96J00-000 075

Single ignition
Applicable Model DF9.9B-250

37100-99E00-000

Single ignition
Applicable Model DT30

EMERGENCY SWITCH PANEL



37803-93J04-000 076

Applicable Model DF9.9B-300AP

37803-99E04-000

Applicable Model DT30

LIGHTING SWITCH PANEL



37210-93J00-000 079

Applicable Model DF9.9B-250, DT30/40W

IGNITION SWITCH PANEL



37100-96J24-000 077

Single ignition with
Emergency-stop switch
Applicable Model DF9.9B-250

IGNITION SWITCH PANEL



37100-96J14-000 078

Dual ignition with
Emergency-stop switch
Applicable Model DF9.9B-250

TROLL MODE SWITCH PANEL



37860-87L00-000 080

Applicable Model DF40A-140A/150TG/ZG/
175TG/ZG/200A/AP/250AP/
300AP

Activates SUZUKI Troll Mode System and controls RPM from idling engine speed up to 1200rpm at every 50rpm.

PTT SWITCH PANEL



37805-93J00-000 081

Applicable Model DF40A-250

WARNING BUZZER

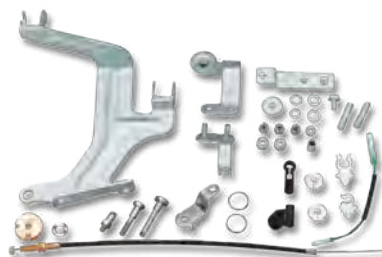


38500-93J90-000

Applicable Model DF9.9B-300AP

REMOTE-CONTROL ATTACHING KIT

Converts ME model to REMOTE-CONTROL model.



67101-91J00-000

086

Applicable Model DF4-6

67130-94L00-000

Applicable Model DF25A/30A

67130-94L10-000

Applicable Model DF25ATH/DF30ATH

67130-99J00-000

CLAMP BRACKET SET (41100-99J00-0EP) is required for installing 67130-99J00-000.

Applicable Model DF8A/9.9A

67130-89L02-000

Applicable Model DF9.9B/15A/20A

CLAMP BRACKET SET

41100-99J00-0EP

Applicable Model DF8A/9.9A

TWIN REMOCON ATTACHMENT KIT



67140-95600-000

Applicable Model DF8A-250, DT30/40W

THRU-HULL FITTING AND HOSE KIT



990C0-20010-000

Single, dual, triple engine installations. One kit is necessary for each engine used. When attaching the rigging tube to the engine, adapter kit 67300-90J00-000/67300-93J00-000 is also required for each engine.

Applicable Model DF70AT-140T/Z, DF150T/Z-300T/Z (model year 2006-)

THRU-HULL-HOSE ATTACHMENT



67300-90J00-000

Applicable Model DF70A-140A

67300-93J00-000

Applicable Model DF150-300AP

STEERING

TILLER HANDLE KIT



63002-88L21-0EP 087

Applicable Model DF40A/50A

63002-88L11-0EP 088

Applicable Model DF60A/50AV/60AV

63002-87L12-0EP 089

Applicable Model DF70A-90A

63002-90J31-0EP 090

with Adjustable Steering Damper

Applicable Model DF100A/115A

Main features



Tachometer with warning indicators



Three position angle adjustable bracket



Troll mode switch

- Activates SUZUKI Troll Mode System and controls RPM from idling engine speed up to 1200rpm at every 50rpm.



Power trim & tilt switch and throttle grip friction adjuster

TILLER HANDLE KIT



The conventional kits are also applicable.

63002-88L07-0EP

Applicable Model DF40A-60A

63002-87L04-0EP

Applicable Model DF70A-90A

63002-90J26-0EP 091

with Adjustable Steering Damper

Applicable Model DF100A/115A

CONTENTS: Ignition switch, Engine-stop switches, Wiring harness, Cables and grommets
TILLER HANDLE KITS are designed for easy installation for selected electric start models.

DUAL-ENGINE TIE-BAR



67600-90J00-000 092

Stainless steel

Applicable Model DF100A-140A

67600-93J00-000

Stainless steel

Applicable Model DF150-250

STEERING EXTENSION KIT



67630-93J00-000 093

for installation of DUAL-ENGINE TIE-BAR (67600-93J00-000)

Applicable Model DF150-250

STEERING CABLE SEAL



41161-94400-000 094

Applicable Model DF8A-250, DT25K-40W

STEERING-BRACKET ATTACHMENT



43755-87L00-000 095

Applicable Model DF70A/90A

43755-88L00-0EP

Applicable Model DF40A-60A

43755-94L00-000

Applicable Model DF25A-30A

43755-99J00-000

Applicable Model DF8A-20A

43755-96320-000

Applicable Model DT25K/30/40W

DRAG-LINK KIT



67700-87L01-000 096

Applicable Model DF70A-90A

67700-93J00-000

Applicable Model DF40A-60A/200-250

67700-96J00-000

Applicable Model DF150-175/200A/AP

67701-87J11-000

Applicable Model DF40A-60A/200-250

67701-87L01-000

Applicable Model DF70A-90A

67701-90J01-000

Applicable Model DF100A-140A

67701-96J00-000

Applicable Model DF150-175/200A/AP

67701-94420-000

Applicable Model DT25K/30

67701-94L00-000

Applicable Model DF25A/30A

67701-99J02-000

Applicable Model DF8A-DF20A

ELECTRICAL PARTS

ELECTRIC STARTER KIT



31000-94L01-000 097

Applicable Model DF25A/30A

31000-99J00-000

Applicable Model DF8A/9.9A

31000-89L02-000

Applicable Model DF9.9B/15A/20A
Converts MZ model into ME model.

BATTERY CHARGING KIT

32000-91J13-000

80W

Applicable Model DF4-6

32000-94L00-000

80W

Applicable Model DF25A/30A

32000-99J00-000

80W

Applicable Model DF8A/9.9A

32000-89L00-000

80W

Applicable Model DF9.9B/15A/20A

RECTIFIER SET



32801-91J01-000 098

Applicable Model DF4-6

32801-95J01-000 099

Applicable Model DF8A/9.9A

32801-89L00-000

Applicable Model DF9.9B/15A/20A

32801-96304-000 100

Applicable Model DT25K/30

32801-94402-000 101

Applicable Model DT40W

RECEPTACLE KIT



39600-91J13-000

Applicable Model DF4-6

39600-94J01-000 102

Applicable Model DF8A/9.9A

39600-89L00-000

Applicable Model DF9.9B/15A/20A



39600-94L00-000 103

Applicable Model DF25A/30A



39600-93910-000 104

Applicable Model DT9.9A-40W

STARTER MOTOR SET



31101-96320-0EP 105

Applicable Model DT30

COUNTER SELECT CONNECTOR



36612-98J01-000 106

Applicable Model DF200AP/250AP/300AP

Converts DF300AP/250AP to counter rotation specification.

BATTERY ISOLATOR LEAD SET



33830-96J00-000 107

Applicable Model DF150TG/ZG/175TG/ZG/
200A/AP/250AP/300AP

33830-98J11-000

Applicable Model DF300AP/250AP

FLYWHEEL



32102-96462-000 108

Applicable Model DT30

STARTING SWITCH & CABLE SET



33800-96304-000 109

Applicable Model DT30

ANODE

FUEL SYSTEM

GENUINE RIGGING-PARTS AND ACCESSORIES

ZINC ANODE for saltwater



55300-95500-000 110

Applicable Model DF8A/9.9A/40A-60A,
DT25K-40W



55320-95311-000 111

Applicable Model DF40A-60A/150-300AP



55125-96310-000 112

Applicable Model DF25/R/Q



55321-90J01-000 113

Applicable Model DF50AV/60AV/100A-140A

ALUMINUM ANODE for brackish water, saltwater



55321-87J00-000 114

Applicable Model DF2.5-300AP,
DT9.9AK/15AK



55320-94900-000 115

Applicable Model DF60A-300AP



55321-95J00-000 116

Applicable Model DF2.5

55321-93J00-000 117

Applicable Model DF150-300AP

55321-99E00-000

Applicable Model DF70AT/TH-300

MAGNESIUM ANODE for freshwater



55321-87J10-000 118

Applicable Model DF4-300AP,DT9.9A/15A



55321-94910-000 119

Applicable Model DF70A-300AP

FUEL TANK

NOTE : These tanks do not meet US-EPA requirements.



65000-99100-000 120

12-litre plastic tank without
fuel-level gauge

Applicable Model DF4/5/6, DT9.9AK/
15AK/25K/40WK
(-K:For Gasoline)

65000-95D01-000 121

25-litre plastic tank with
fuel-level gauge

Applicable Model DF8A-140A,
DT9.9AK-40W/WR/WK
(-K:For kerosene)

65000-89L10-000

12-litre plastic tank

Applicable Model DF8A-20A

REPLACEMENT FUEL CAP

NOTE : These caps do not meet US-EPA requirements.

65520-99100-000

for 12-litre tank without fuel-level gauge

Applicable Model DF5-20A/R,DT9.9AK/15AK/25K/40WK

65520-95D01-000

for 25-litre tank with fuel-level gauge

Applicable Model DF8A-140A,DT9.9AK-40W/WR/WK

FUEL-HOSE SOCKET



65750-98505-000 122

Metal, Inner diameter: 11.2 mm

Applicable Model DF4-20A/R, DT9.9/K-40W/
WR/WK



65750-87J11-000 123

Plastic, Inner diameter: 6.6 mm

Applicable Model DF4/8A-30A



65750-955L0-000 124

Metal, Inner diameter: 13.0 mm

Applicable Model DF8A/R-140A,
DT9.9AK-40W/WR/WK

FUEL SYSTEM

FUEL CONNECTOR (ENGINE SIDE)



65720-986L0-000 125

Plastic

Applicable Model DF4

FUEL CONNECTOR (TANK SIDE)



65740-95D01-000 126

Outer diameter: 13 mm, 1/4"NPT

Applicable Model DF8A/R-140A,
DT9.9/K-40W/WR/WK

SQUEEZE PUMP



65770-99J01-000 127

Small-in & Large-out

Applicable Model DF4-6, DT9.9AK/15AK/25K/40WK

65770-90J11-000

Large-in & Large-out

Applicable Model DF8A-140A, DT9.9AK/15AK/25K/40WK

65770-93J11-000

Large-in & Large-out

Applicable Model DF150-300AP

SQUEEZE PUMP

(Meets US-EPA requirements.)

65770-94J02-000

Small-in & Large-out

Applicable Model DF4/6

65770-90J01-000

Large-in & Large-out

Applicable Model DF8A-25A/30A

65770-93J02-000

Large-in & Large-out

Applicable Model DF150-300AP

FUEL-HOSE COMPONENT



65700-94JD1-000

for 12-litre plastic tank to engine

Applicable Model DF4-6

65700-93J02-000 128

for fuel tank to engine

Applicable Model DF150-300AP

65700-87J15-000

for 25-litre plastic tank to engine

Applicable Model DF8A-20A

65700-90J14-000

for 25-litre plastic tank to engine

Applicable Model DF40A-140A

65700-95D03-000

for 12-litre plastic tank to engine (gasoline)

Applicable Model DT9.9AK/15AK/25K/40WK

65700-96362-000

for 25-litre plastic tank to engine (kerosene)

Applicable Model DT9.9AK/15AK/25K/40WK

65700-94415-000

with fuel filter (gasoline)

Applicable Model DT9.9AK/15AK/25K/40WK

65700-94433-000

with fuel filter (kerosene)

Applicable Model DT9.9AK/15AK

Only for P36 ver.

FUEL-HOSE COMPONENT

(Meets US-EPA requirements.)

65700-91J25-000

Applicable Model DF4/6

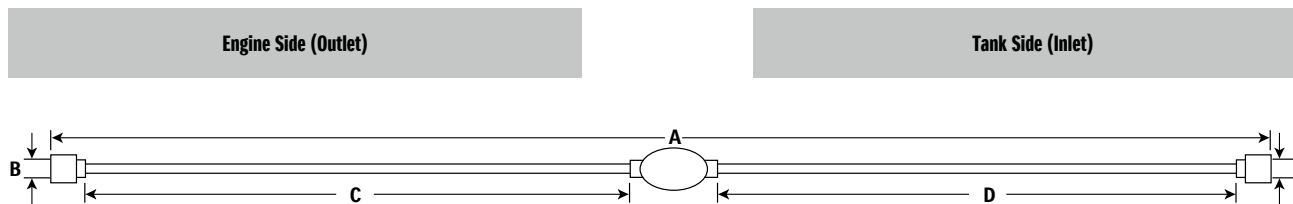
65700-87J24-000

Applicable Model DF8A-25

65700-88L03-000

Applicable Model DF40A-60A

FUEL-HOSE COMPONENT Chart



FUEL HOSE COMPONENT		SOCKET			HOSE				SQUEEZE PUMP	HOSE				SOCKET		
Part Number	A Length (mm)	Material	B I/D (mm)	Part Number	C Length (mm)		I/D (mm)	O/D (mm)		D Length (mm)		I/D (mm)	O/D (mm)	Material	E I/D (mm)	Part Number
65700-94JD1-000	1970	Plastic	6.6	65750-87J11-000	700	Large	7.3	12.5	65770-99J01-000	1100	Small	5.3	10.5	Metal	11.2	65750-98505-000
65700-93J02-000	2370	(no socket)	-	-	(no hose)	-	-	-	65770-93J11-000	2250	Large	9.0	14.0	(no socket)	-	-
65700-87J15-000	1970	Plastic	6.6	65750-87J11-000	700		7.3	12.5	65770-90J11-000	1100		7.3	12.5	Metal	13.0	65750-95500-000
65700-90J14-000	1250	(no socket)	-	-	(no hose)	-	-	-	65770-90J11-000	1100		7.3	12.5	Metal	13.0	65750-95500-000
65700-95D03-000	2550	Metal	13.0	65750-95500-000	300		7.3	12.5	65770-99J01-000	2090		5.3	10.5	Metal	11.2	65750-98505-000
65700-96362-000	2620	Metal	11.2	65750-98505-000	300		5.3	10.5	-	2250		7.3	12.5	Metal	13.0	65750-95500-000
65700-94415-000	3100	Metal	13.0	65750-95500-000	300		7.3	12.5	65770-90J11-000	2600		7.3	12.5	-	-	-
65700-94433-000	3100	Plastic	13.8	65750-94404-000	3000		7.3	12.5	-	-		-	-	-	-	-
65700-91J25-000	2000	Plastic	6.6	65750-87J11-000	700		7.3	12.5	65770-94J02-000	1100		5.3	10.5	Metal	11.2	65750-98505-000
65700-87J24-000	2000	Plastic	6.6	65750-87J11-000	700		7.3	12.5	65770-90J01-000	1100		7.3	12.5	Metal	13.0	65750-95500-000
65700-88L03-000	1280	(no socket)	-	-	(no hose)	-	-	-	65770-90J01-000	1100		7.3	12.5	Metal	13.0	65750-95500-000

WATER SEPARATOR / FUEL FILTER



65900-98J00-000 129

Including filter element

Applicable Model DF8A-300AP,DT9.9A-40W/WR/WK

ELEMENT SET



65910-98J00-000 130

Replacement filter for water separator/fuel filter 65900-98J00-000

Applicable Model DF8A-300AP, DT9.9A-40W/WR/WK

CARE & MAINTENANCE ITEM

ENGINE COVER



990F0-88L00-010 136

Applicable Model DF40A/DF50A/DF60A with new 4stroke logo



990F0-87J00-010

Applicable Model DF40/50

990F0-99E00-010 137

Applicable Model DF60/70

990F0-87L00-010

Applicable Model DF70A/80A/90A

990F0-90J00-010

Applicable Model DF90/115

990F0-92J00-010

Applicable Model DF140

990F0-96J00-010

Applicable Model DF150/175

990F0-93J00-010

Applicable Model DF200/225/250

990F0-98J00-010

Applicable Model DF300

PAINT

99000-10202-0EP

Touch-up paint set black

12ml

997SO-41004-CLR 138

AE clear coat

400ml

997SO-41004-0EP 139

AE shadow black metallic

400ml

997SO-41004-0ED 140

AE california gray metallic

400ml



138

139

140

FLUSH-HOSE ATTACHMENT



55181-95200-000 145

Applicable Model DF4-6/40A-60A, DT25K/30/40W



17917-87L00-000 146

Applicable Model DF8A-300A

GEAR OIL

SUZUKI APPROVED GENUINE OIL by MOTUL

These products are supplied directly by MOTUL. Please note that these oils are not available in some countries. Please contact with local distributor of MOTUL.

Suzuki and MOTUL have been in partnership in MotoGP since 1988. Extending this trusted relationship led to the development of new Suzuki Marine Oils. These ranges of oils have excellent oxidation stability and provide outstanding rust protection under severe operating conditions.



API Classification	SAE Viscosity Grade									
SG										
SH										
SL										
SJ										
SM										
TEMP. C	-20	-10	0	10	20	30	40			
F	-4	14	32	50	68	86	104			



MGO-035M

SAE 90, API GL-5
Packaging unit 24 x 0.35 litre

MGO-1M

"S" MARINE GEAR OIL SAE90
Packaging unit 12 x 1 litre

Fully Synthetic:

SUPER 5M

SAE 5W-40 fully synthetic
4 x 5 litre FCW

SUPER-1M

SAE 5W-40 fully synthetic
20 x 1 litre FCW

Semi Synthetic:

99000-99074-M04

SAE 10W-40 semi synthetic
4 x 5 litre FCW

99000-99074-M03

SAE 10W-40 semi synthetic
12 x 1 litre FCW

99000-99074-M05

SAE 10W-40 semi synthetic
60 litre FCW

2-stroke oil:

MARIN-1M

TCW-3
12 x 1 litre FCW

MARIN-4M

TCW-3
12 x 1 litre FCW

Mineral Oil:

MNM-1M

15W-40
20 x 1 litre

MNM-1M

15W-40
4 x 4 litre

APPLICATION CHART

ITEM	Page	DF300AP	DF250AP	DF250		DF225		DF200		DF200AP	DF200A	DF175A				DF150				DF140A		DF115A			DF100A	DF90A	DF80A	DF70A		DF60A								
		DF300AP	DF250AP	DF250ST	DF250T	DF250Z	DF225T	DF225Z	DF200T	DF200Z	DF200AP	DF200AT	DF200AZ	DF175TG	DF175ZG	DF175T	DF175Z	DF150AS	DF150TG	DF150ZG	DF150T	DF150Z	DF140AT	DF140AZ	DF115AS	DF115AT	DF115AZ	DF100AT	DF90AT	DF90ATH	DF80AT	DF70AT	DF70ATH	DF60AT	DF60ATH	DF60AQH		
NEW MULTI FUNCTION GAUGE	P.06	○	○	○	○	○	○	○	○	○	○	○	○	○	○	○	○	○	○	○	○	○	○	○	○	○	○	○	○	○	○	○	○	○	○	○	○	
KEYLESS START SYSTEM	P.07									○																												
SUZUKI MODULAR INSTRUMENT SYSTEM	P.08-13	○	○	○	○	○	○	○	○	○	○	○	○	○	○	○	○	○	○	○	○	○	○	○	○	○	○	○	○	○	○	○	○	○	○	○	○	
ANALOG INSTRUMENT	P.14-15			○	○	○	○	○	○																													
ELECTRONIC THROTTLE AND SHIFT SYSTEM	P.16-19																																					
ELECTRONIC REMOTE CONTROL KIT	P.16-17	○	○							○			○	○				○	○																			
ELECTRONIC REMOTE CONTROL BOX	P.16	○	○							○			○	○				○	○																			
BATTERY LEAD	P.19	○	○							○			○	○				○	○																			
MECHANICAL REMOTE CONTROL SYSTEM	P.20-23																																					
MECHANICAL REMOTE CONTROL KIT	P.20			○	○	○	○	○	○		○	○				○				○	○	○	○	○	○	○	○	○	○	○	○	○	○	○	○	○	○	
MECHANICAL REMOTE CONTROL BOX	P.21			○	○	○	○	○	○		○	○				○				○	○	○	○	○	○	○	○	○	○	○	○	○	○	○	○	○	○	○
BATTERY LEAD	P.21			○	○	○	○	○	○		○	○				○				○	○	○	○	○	○	○	○	○	○	○	○	○	○	○	○	○	○	○
REMOTE-CONTROL CABLE	P.23			○	○	○	○	○	○		○	○				○				○	○	○	○	○	○	○	○	○	○	○	○	○	○	○	○	○	○	○
REMOTE-CONTROL ATTACHING KIT	P.23			○	○	○	○	○	○		○	○				○				○	○	○	○	○	○	○	○	○	○	○	○	○	○	○	○	○	○	○
STEERING	P.24-25																																					
TILLER HANDLE KIT	P.24																								○			○										
DUAL-ENGINE TIE-BAR	P.25			○	○	○	○	○	○	○	○	○	○	○	○	○	○	○	○	○	○	○	○	○	○	○	○	○	○	○	○	○	○	○	○	○	○	○
STEERING EXTENSION KIT	P.25			○	○	○	○	○	○	○	○	○	○	○	○	○	○	○	○	○	○	○	○	○	○	○	○	○	○	○	○	○	○	○	○	○	○	○
STEERING -BRACKET ATTACHMENT	P.25																											○										
DLUG-LINK KIT	P.25			○	○	○	○	○	○	○	○	○	○	○	○	○	○	○	○	○	○	○	○	○	○	○	○	○	○	○	○	○	○	○	○	○	○	○
ELECTRICAL PARTS	P.28																																					
COUNTER SELECT CONNECTOR	P.28	○	○							○																												
BATTERY ISOLATOR LEAD SET	P.28	○	○							○	○	○	○	○	○	○	○	○	○	○	○	○	○	○	○	○	○	○	○	○	○	○	○	○	○	○	○	○
ELECTRIC STARTER KIT (ONLY FOR MZ type)	P.28																																					
BATTERY CHARGING KIT (ONLY FOR MZ type)	P.28																																					
RECTIFIER SET (ONLY FOR MZ type)	P.28																																					
RECEPTACLE KIT (ONLY FOR MZ type)	P.28																																					
ANODE	P.29	○	○	○	○	○	○	○	○	○	○	○	○	○	○	○	○	○	○	○	○	○	○	○	○	○	○	○	○	○	○	○	○	○	○	○	○	○
FUEL SYSTEM	P.29-31	○	○	○	○	○	○	○	○	○	○	○	○	○	○	○	○	○	○	○	○	○	○	○	○	○	○	○	○	○	○	○	○	○	○	○	○	○

SERVICE & SNABBLISTA

Innehåll

Modellförteckning _____	34–35	Kompleta växelhus _____	47
Leveransservice och inkörning _____	36	Tändstift _____	48
Serviceschema 4T-motorer _____	37–40	Oljevolym _____	49
Propellar _____	41–44	Suzuki oljor _____	49
Propellertillbehör _____	45	Multi Function Gauge Kit _____	50
Kylsystem _____	46	Övrigt (styrning, reglagenycklar, NMEA, servicekit, serviceweb) _____	51

Under säsongen 2012 avskaffade Suzuki begreppet årsmodell på sina motorer. För att identifiera motorn och beställa rätt delar används istället första siffran i motorns individnummer (batchnummer). Det är denna siffra som fr o m nu anges i tabellerna för fyrtaktsmotorer i Snabblistan. Tvåtaktsmotorerna omfattas ej.

Modellförteckning

Modellförteckningen hjälper dig att bestämma årsmodellen på en Suzuki utombordare. På utombordarens modellskylt finns alla nödvändiga uppgifter. T.o.m. årsmodell 1979 är årsbokstaven instansad före motornumret (t.ex. C=1977, D=1978). Fr.o.m. 1980 är det den första siffran i motornumret som anger årsmodellen (t.ex. 0=1980, 0=1990).

Färgkoder 2-taktare

Blå motor: 1980–1982, färgnummer 01J
 Ljusgrå motor: 1983–1988, färgnummer 02M
 Grå motor: 1989–2001, färgnummer 0ED
 Svart motor: 2002–, färgnummer 0EP

Färgkoder 4-taktare

Vit motor: 1996–1997, färgnummer Z11
 Svart motor: 1998–2010, färgnummer 0EP

4-taktare

Årtal	96	97	98	99	00	01	02	03	04	05	06	07	08	09	10	11					
Mod/Kod	VT	VV	VW	X	Y	K1	K2	K3	K4	K5	K6	K7	K8	K9	K10	1-	2-	3-	4-	5-	
DF2.5							•	•	•	•	•	•	•	•	•	•	•	•	•	•	•
DF4								•	•	•	•	•	•	•	•	•	•	•	•	•	•
DF5							•	•	•	•	•	•	•	•	•	•	•	•	•	•	•
DF6								•	•	•	•	•	•	•	•	•	•	•	•	•	•
DF8A/9.9A															•	•	•	•	•	•	•
DF9.9	•	•	•	•	•	•	•	•	•	•	•	•	•	•							
DF9.9B																				•	•
DF15	•	•	•	•	•	•	•	•	•	•	•	•	•	•	•	•					
DF15A/20A																		•	•	•	•
DF25 V2											•	•	•	•	•	•	•	•	•	•	•
DF25					•	•															
DF30					•	•	•	•	•	•	•										
DF40/50				•	•	•	•	•	•	•	•	•	•	•	•	•					
DF40A/50A																•	•	•	•	•	•
DF60A															•	•	•	•	•	•	•
DF60			•	•	•	•	•	•	•	•	•	•	•	•							
DF70			•	•	•	•	•	•	•	•	•	•	•								
DF70A														•	•	•	•	•	•	•	•
DF80A														•	•	•	•	•	•	•	•
DF90A														•	•	•	•	•	•	•	•
DF90						•	•	•	•	•	•	•	•								
DF100A/115A/140A																			•	•	•
DF100															•	•	•	•			
DF115					•	•	•	•	•	•	•	•	•	•	•	•	•	•			
DF140						•	•	•	•	•	•	•	•	•	•	•	•				
DF150											•	•	•	•	•	•	•	•			
DF175											•	•	•	•	•	•	•	•			
DF150TG																				•	•
DF175TG																				•	•
DF200									•	•	•	•	•	•	•	•	•	•			
DF200AP																					•
DF225									•	•	•	•	•	•	•	•	•	•			
DF250									•	•	•	•	•	•	•	•	•	•			
DF250AP																				•	
DF300												•	•	•	•	•	•	•			
DF300AP																		•	•	•	•

MODELLFÖRTECKNING

2-taktare																																					
Årtal	75	76	77	78	79	80	81	82	83	84	85	86	87	88	89	90	91	92	93	94	95	96	97	98	99	00	01	02	03	04	05	06					
Mod/Kod	A	B	C	D	F	G	J	VZ	QD	VE	VF	VG	VH	VJ	VK	VL	VM	VN	VP	VR	VS	VT	VV	VW	X	Y	K1	K2	K3	K4	K5	K6					
DT2			•	•	•	•	•	•	•	•	•	•	•	•	•	•	•	•	•	•	•	•															
DT2,2																							•	•	•	•	•	•	•	•	•						
DT3,5					•	•	•	•	•	•																											
DT4				•							•	•	•	•	•	•	•	•	•	•	•	•	•	•	•	•	•	•									
DT4,5/DT9	•	•	•																																		
DT5				•	•	•	•	•	•	•	•	•	•	•	•	•	•	•	•	•	•	•	•														
DT6										•	•	•	•	•	•	•	•	•	•	•	•	•	•	•	•	•	•	•	•								
DT7,5/DT14	•	•	•	•	•																																
DT8					•	•	•	•	•	•	•	•	•	•									•	•	•	•	•	•									
DT8C														•	•	•	•	•	•	•	•	•															
DT9,9		•	•	•	•	•	•	•	•	•	•	•	•	•	•								•	•	•	•	•	•	•	•	•	•	•				
DT9,9C														•	•	•	•	•	•	•	•	•															
DT15									•	•	•	•	•	•									•	•	•	•	•	•	•	•	•	•	•				
DT15C														•	•	•	•	•	•	•	•	•															
DT16	•	•	•	•	•	•	•	•																													
DT20			•	•	•	•	•	•	•	•	•	•	•	•	•	•	•	•	•	•	•	•	•	•	•	•											
DT25	•	•	•	•	•				•																												
DT25C															•	•	•	•	•	•	•	•															
DT28				•	•	•	•																														
DT30									•	•	•	•	•	•													•	•	•	•	•	•	•	•			
DT30C														•	•	•	•	•	•	•	•	•	•	•	•	•											
DT40					•	•	•	•	•	•	•	•	•	•	•	•	•	•	•	•	•	•	•	•	•	•											
DT50			•	•	•	•	•	•	•	•																											
DT55										•	•	•	•	•	•	•	•	•	•	•	•	•	•	•	•												
DT60									•	•																											
DT65				•	•	•	•	•	•	•	•	•	•	•	•	•	•	•	•	•	•	•	•	•	•												
DT75									•	•	•	•																									
DT85				•	•	•	•	•	•	•	•	•	•	•	•	•	•	•	•	•	•	•	•	•	•	•	•										
DT100	•															•	•	•	•	•	•	•	•	•	•	•	•										
DT115							•	•	•	•	•	•	•	•	•	•	•	•	•	•	•	•	•	•	•	•	•										
DT140							•	•	•	•	•	•	•	•	•	•	•	•	•	•	•	•	•	•	•	•	•										
DT150	•													•	•	•	•	•	•	•	•	•	•	•	•	•	•	•									
DT200														•	•	•	•	•	•	•	•	•	•														
DT225																		•	•	•	•	•	•	•	•	•	•	•									

OBS! 2007 utgick alla tvåtaktare ur vårt sortiment.

LEVERENSSERVICE & INKÖRNING

KONTROLLER	ÅTGÄRD
Motorolja	F
Växelhjul	K/F
Växellågen	K
Varningssystem lampor/summer	K
PROVKÖRNING	
Spärr för start med växel i	K
Nödstopp	K
Acceleration	K
Propellerstigning	K
Blandskruv förgasare	K/J
Tomgång med växel	K/J
Tomgång på friläge	K/J
Kylning	K
Reglagekablar	K/J
Växlingsfunktion	K

F= Fyll på

K= Kontrollera

J= Justera vid behov

INKÖRNING 4-TAKT.

Om motorn är ny eller nyrenoverad är de 10 första körtimmarna mycket viktiga. Dessa påverkar direkt motorns livslängd. Inkörningstid: 10 timmar

Varmkörning under inkörningen

Låt motorn gå på tomgång i minst fem minuter efter kallstart, för att nå korrekt drifttemperatur. Kontrollera kylningen. (Skvaller-strålen).

Gaspådrag

Obs! Undvik att hålla konstant motorvarv i mer än fem minuter under inkörningen. Variera gaspådraget då och då.

1. De första två timmarna

Endast tomgång (ev. med växel i) den första kvarten. Den resterande tiden, (1 timme och 45 minuter), max halv (1/2) gas.

Obs! Gasen kan tillfälligt ökas för att få båten att nå planingsläge, väl där ska gasen omedelbart sänkas till det rekommenderade varvtalet.

2. Nästa timme

Max ¾- gas.

3. De sista sju timmarna

Kör motorn på önskat varvtal. Kör dock inte på samma varvtal i mer än fem minuter i sträck.

Rekommenderat tomgångsvarvtal avseende Suzukis fyrtaktsmotorer:

Modell	Rek tomgångs- varvtal	Max varv
DF2.5	900	5250-5750
DF4	1300	4000-5000
DF5	1300	4500-5500
DF6	1300	4750-5750
DF8A/9.9A	950	5200-6200
DF9.9	900	4900-5500
DF9.9B	850	4700-5700
DF15	900	5400-6000
DF15A	850	5000-6000
DF20A	850	5300-6300
DF25V2	950	4700-5300
DF25/25A	900	5000-5600
DF30/30A	900	5500-6100
DF40	850	5200-5800
DF50	850	5900-6500
DF40A/50A	800	5000-6000
DF60A	800	5300-6300
DF60	700	4700-5300
DF70	700	5200-5800
DF70A/80A	600	5000-6000
DF90A	600	5500-6500
DF90	625	4500-5500
DF100/100A	625	5000-6000
DF115/115A	625	5000-6000
DF140/140A	700	5600-6200
DF150/150TG	650	5000-6000
DF175/175TG	650	5500-6100
DF200/225	650	5000-6000
DF200AP/250	650	5500-6100
DF250AP/300/300AP	650	5700-6300

Rekommenderade tider för periodiskt underhåll av Suzukis fyrtaktsmotorer:

Modell	Tid för service(timmar)		
	20-tim	Var 100:e	Var 200:e
DF2.5-6	1,3	1,4	1,5
DF8-25	1,6	1,8	2
DF30-60A	2,2	2,4	2,7
DF60-140 även A	2,9	2,9	3,2
DF150/175*	3,7	3,7	4
DF200-300	4,2	4,2	4,5

Tid för upptagning och eventuell rengöring ingår ej. I förekommande fall ingår tid för kontroll av ventiler, dock ej justering.

* Tid för kontroll/byte av balansaxelkedja ingår ej. För närmare förklaring av serviceintervallen, se respektive motors service-manual.

Rekommenderad lägsta batterikapacitet avseende Suzukis fyrtaktsmotorer:

Modell	Marine Cran- king Amps (MCA)/ ABYC	Cold Cran- king Amps (CCA)/EN	Reserve Capacity (RC)Minu- tes/SAE	
DF300/300AP/250AP	1000	780	180	12Volt, 130AH
DF200/225/250	850	650	180	12Volt, 100AH
DF150/175				
DF100/115/140 +A	650	500	160	12Volt, 100AH
DF70A/80A/90A				
DF40A/50A/60A	650	500	160	12Volt, 80AH
DF40/50	650	500	160	12Volt, 70AH
DF25	450	320	70	12Volt, 40AH
DF15A/20A	450	320	70	12Volt, 35AH
DF15	450	320	70	12Volt, 35AH
DF8A/9.9A				

SERVICESHEMA 4T-MOTORER

DF2.5	Antal	Art.nr.	20 tim inkörning	Var 100:e tim 12 mån	Var 200:e tim 24 mån
Tändstift	1	CR6HSA		I	R
Motorolja	0,38	MnM 10-40	R	R	I
Oljefilter	0				
Packning plugg	1	09168-10022	R	R	
Växehusolja	0,07	MGO-035M	R	R	
Oljepluggspackning	2	59178-97J00	R	R	
Saxpinne	1	09204-02001	I	I	R
Bränslefilter*	0				
Impeller	1	17461-97JMO			R
Ventilspel		0,15	I		I
Ventkåpspackning	1	1189-97JL0	R		R
Anoder och vajrar				I	I

DF4/5/6	Antal	Art.nr.	20 tim inkörning	Var 100:e tim 12 mån	Var 200:e tim 24 mån
Tändstift	1	BPR6ES		I	R
Tändstift, 1 -	1	CR6E		I	
Motorolja	0,7	MnM 10-40	R	R	I
Oljefilter	1	16510-91J00			I
Packning plugg	1	09168-10022	R	R	
Växehusolja	0,19	MGO-035M	R	R	
Oljepluggspackning	2	09168-10022	R	R	
Saxpinne	1	09204-03003	I	I	R
Bränslefilter*	1	15410-98500	I	I	I
Impeller	1	17461-985M0			R
Impeller, 1 -	1	17461-985L0			
Ventilspel		0,03-0,07	I		I
Ventkåpspackning	1	11189-91J00	R		R
Anoder och vajrar				I	I

DF8A/9.9A	Antal	Art.nr.	20 tim inkörning	Var 100:e tim 12 mån	Var 200:e tim 24 mån
Tändstift	1	CR6E		I	R
Motorolja	0,8	MnM 10-40	R	R	R
Oljefilter	1	16510-05240			I
Packning plugg	1	09168-12017	R	R	
Växehusolja	0,25	MGO-035M	R	R	
Oljepluggspackning	2	09168-10022	R	R	
Saxpinne	1	09204-02004	I	I	R
Bränslefilter*	1	15410-98500	I	I	I
Impeller	1	17461-939M0			R
Impeller, 1 -	1	17461-939L0			
Ventilspel In: 0,010 - 0,037 Ut: 0,0303 - 0,057			I		I
Ventkåpspackning	1	11178-99J00	R		R
Kamrem	1	12761-99J00			I
Anoder och vajrar				I	I

DF9.9 6-9 DF15 6-1	Antal	Art.nr.	20 tim inkörning	Var 100:e tim 12 mån	Var 200:e tim 24 mån
Tändstift 6-4	2	DCPR6E		I	R
Tändstift årsmod. 5-0	2	BKR6E		I	R
Tändstift - DF15, 1-	2	LPR6EA-9			
Motorolja	1,1	MnM 10-40	R	R	R
Oljefilter	1	16510-05240	R		R
Packning plugg	1	09168-12017	R	R	
Växehusolja	0,17	MGO-035M	R	R	
Oljepluggspackning	2	09168-10022	R	R	
Saxpinne	1	09204-02004	I	I	R
Bränslefilter*	1	15410-98500	I	I	I
Impeller	1	17461-939M0			I
Ventilspel 6-4: In 0,08-0,12 Ut 0,13-0,17 5- : In 0,18-0,22 Ut 0,18-0,22			I		I
Ventkåpspackning	1	11162-93E01	R		R
Kamrem	1	12761-93EL0			I
Anoder och vajrar				I	I

I Inspect/Rengör/Byte vid behov

R Replace/Byte

* Byt med intervall 400 timmar eller 2 år.

SERVICESHEMA 4T-MOTORER

DF15A/20A	Antal	Art.nr.	20 tim inkörning	Var 100:e tim 12 mån	Var 200:e tim 24 mån
Tändstift	2	CPR6EA-9		I	R
Motorolja	1	MnM 10-40	R	R	R
Oljefilter	1	16510-45H10	R		R
Packning plugg	1	09168-12017	R	R	R
Växehusolja	0,25	MGO-035M	R	R	R
Oljepluggspackning	2	09168-10022	R	R	R
Saxpinne	1	09204-02004	I	I	R
Bränslefilter*	1		I	I	I
Impeller	1	17461-939L0			R
Ventilspel		0,18-0,22	I		I
Ventkåpspackning	1	11162-89L00	R		R
Anoder och vajrar				I	I

DF25 V2	Antal	Art.nr.	20 tim inkörning	Var 100:e tim 12 mån	Var 200:e tim 24 mån
Tändstift	2	BKR6E		I	R
Motorolja	1,5	MnM 10-40	R	R	R
Oljefilter	1	16510-87J00	R		R
Packning plugg	1	09168-12012	R	R	R
Växehusolja	0,43	MGO-035M	R	R	R
Oljepluggspackning	2	09168-10022	R	R	R
Saxpinne	1	09204-03003	I	I	R
Bränslefilter*	1	15410-87J30	I	I	I
Impeller	1	17461-96312			R
Ventilspel		0,03-0,07	I		I
Ventkåpspackning	2	11189-95J00	R		R
Anoder och vajrar				I	I

DF25/30A	Antal	Art.nr.	20 tim inkörning	Var 100:e tim 12 mån	Var 200:e tim 24 mån
Tändstift	3	CPR6EA-9		I	R
Motorolja	3,2	MnM 10-40	R	R	R
Oljefilter	1	16510-87JL0	R		R
Packning plugg	1	09168-12012	R	R	R
Växehusolja	0,23	MGO-035M	R	R	R
Oljepluggspackning	2	59178-97J00	R	R	R
Saxpinne	1	09204-03003	I	I	R
Bränslefilter*	1	15410-87L00	I	I	I
Impeller	1	17461-94L00			R
Ventilspel	In: 0,18-0,22 Ut: 0,20-0,24		I		I
Ventkåpspackning	1	11162-94L00	R		R
Anoder och vajrar				I	I

DF40/50	Antal	Art.nr.	20 tim inkörning	Var 100:e tim 12 mån	Var 200:e tim 24 mån
Tändstift	3	DCPR6E		I	R
Motorolja	2,4	MnM 10-40	R	R	R
Oljefilter	1	16510-87J00	R	R	R
Packning plugg	1	09168-12012	R	R	R
Växehusolja	0,61	MGO-035M	R	R	R
Oljepluggspackning	2	09168-10022	R	R	R
Saxpinne	1	09204-03003	I	I	R
Bränslefilter Low *	1	15410-87J10	I	I	I
Bränslefilter High **	1	15410-87J00			
Impeller	1	17461-96312			R
Ventilspel		0,18-0,24			I
Ventkåpspackning	1	11189-87J00			R
Anoder och vajrar				I	I

I Inspect/Rengör/Byte vid behov

R Replace/Byte

* Byt med intervall 400 timmar eller 2 år.

** Byt med Intervall 1000 timmar eller 4 år

SERVICESHEMA 4T-MOTORER

DF40A/50A/60A	Antal	Art.nr.	20 tim inkörning	Var 100:e tim 12 mån	Var 200:e tim 24 mån
Tändstift	3	DCPR6E		I	R
Motorolja	2,9	MnM 10-40	R	R	R
Oljefilter	1	16510-87J00	R	R	R
Packning plugg	1	09168-12012	R	R	R
Växehusolja	0,61	MGO-035M	R	R	R
Oljepluggspackning	2	09168-10022	R	R	R
Saxpinne	1	09204-03003	I	I	R
Bränslefilter Low *	1	15410-96J00	I	I	I
Impeller	1	17461-96312			R
Ventilspel	In: 0,18 - 0,22 Ut: 0,28 - 0,32				I
Ventkåpspackning	1	11189-88L00			R
Anoder och vajrar				I	I

DF70A/80A/90A	Antal	Art.nr.	20 tim inkörning	Var 100:e tim 12 mån	Var 200:e tim 24 mån
Tändstift	4	DCPR6E		I	R
Motorolja	4,3 I	MnM 10-40	R	R	R
Oljefilter	1	16510-61A31	R		R
Packning plugg	1	09168-12012	R	R	R
Växehusolja	0,85 I	MGO-035M	R	R	R
Oljepluggspackning	2	09168-10034	R	R	R
Saxpinne	1	09204-03003	I	I	R
Bränslefilter Low*	1	15410-87L00	I	I	I
Bränslefilter High**	1	15440-87L10			
Impeller	1	17461-87E12			R
Ventilspel 0,23-0,27					I
Ventkåpspackning	1	11189-87L00			R
Anoder och vajrar				I	I

I Inspect/Rengör/Byte vid behov

R Replace/Byte

* Byt med intervall 400 timmar eller 2 år.

** Byt med Intervall 1000 timmar eller 4 år

DF60 - 9 DF70 - 8	Antal	Art.nr.	20 tim inkörning	Var 100:e tim 12 mån	Var 200:e tim 24 mån
Tändstift	4	BPR6ES		I	R
Motorolja	4,8	MnM 10-40	R	R	R
Oljefilter	1	16510-87J00	R	R	R
Packning plugg	1	09168-12012	R	R	R
Växehusolja	1,05	MGO-035M	R	R	R
Oljepluggspackning	2	09168-10022	R	R	R
Saxpinne	1	09204-03003	I	I	R
Bränslefilter Low * -2007	1	15410-87J30	I	I	I
2007-	1	15410-87J10			
Bränslefilter High **	1	15440-99E01			
Impeller	1	17461-87E12			R
Ventilspel In 0,11-015			I		I
Ventilspel Avg 0,13-0,17			I		I
Ventkåpspackning	1	11189-99E00	R		R
Kamrem	1	12761-72F00			I
Anoder och vajrar				I	I

DF90/100/115/ DF100A/115A/140A	Antal	Art.nr.	20 tim inkörning	Var 100:e tim 12 mån	Var 200:e tim 24 mån
Tändstift	4	BKR6E		I	R
Motorolja	5,7	MnM 10-40	R	R	R
Oljefilter	1	16510-61A31	R		R
Packning plugg	1	09168-12012	R	R	R
Växehusolja	1,05	MGO-035M	R	R	R
Oljepluggspackning	2	09168-10022	R	R	R
Saxpinne	1	09204-03003	I	I	R
Bränslefilter Low*	1	15410-87J30	I	I	I
Bränslefilter High**	1	15440-90J00			
Impeller	1	17461-90J01			R
Ventilspel 0,23-0,27					I
Ventkåpspackning	1	11189-90J00			R
Anoder och vajrar				I	I

SERVICESHEMA 4T-MOTORER

DF140	Antal	Art.nr.	20 tim inkörning	Var 100:e tim 12 mån	Var 200:e tim 24 mån
Samma som DF 90/115 förutom ett annat oljefilter					
Oljefilter	1	16510-92J00	R		R

DF200/225/250	Antal	Art.nr.	20 tim inkörning	Var 100:e tim 12 mån	Var 200:e tim 24 mån
Tändstift	6	BKR6E		I	R
Motorolja	8,2	MnM 10-40	R	R	R
Oljefilter	1	16510-96J00	R		R
Packning plugg	1	09168-12012	R	R	R
Växehusolja	1,1	MGO-035M	R	R	R
Oljepluggspackning	2	09168-10034	R	R	R
Saxpinne	1	09204-03003	I	I	R
Bränslefilter Low*	1	15412-93J00		I	I
Bränslefilter High**	1	15440-93J00			
Impeller	1	17461-93J00			R
Ventsp. IN 0,23-0,27					I
Ventsp. AVG 0,33-0,37					I
Ventkåpspkn. BB	1	11189-93J00			R
Ventkåpspkn. StB	1	11179-93J00			R
Anoder och vajrar				I	I

DF200AP	Antal	Art.nr.	20 tim inkörning	Var 100:e tim 12 mån	Var 200:e tim 24 mån
Tändstift	4	09482-00649		I	R
Motorolja	8,5	MnM 10-40	R	R	R
Oljefilter	1	16510-96J00	R		R
Packning plugg	1	09168-12012	R	R	R
Växehusolja	1,1	MGO-035M	R	R	R
Oljepluggspackning	2	09168-10034	R	R	R
Saxpinne	1	09204-03003	I	I	R
Bränslefilter Low*	1	15412-92J00	I	I	I
Bränslefilter High**	1	15440-96J01			
Impeller	1	17461-90J01			R
Ventsp. IN		0.23 – 0.27			I
Ventsp. AVG		0.30 – 0.34			I
Ventkåpspkn.	1	11189-96J00			R
Balansaxelkedja	1	12670-96K00			R
Anoder och vajrar				I	I

I Inspect/Rengör/Byte vid behov

R Replace/Byte

* Byt med intervall 400 timmar eller 2 år.

** Byt med Intervall 1000 timmar eller 4 år

DF150/150TG/175/175TG	Antal	Art.nr.	20 tim inkörning	Var 100:e tim 12 mån	Var 200:e tim 24 mån	Var 1600:e tim
Tändstift	4	BKR6E		I	R	
Motorolja	8,5	MnM 10-40	R	R	R	
Oljefilter	1	16510-96J00	R		R	
Packning plugg	1	09168-12012	R	R	R	
Växehusolja	1,1	MGO-025	R	R	R	
Oljepluggspackning	2	09168-10034	R	R	R	
Saxpinne	1	09204-03003	I	I	R	
Bränslefilter Low*	1	15410-96J00	I	I	I	
Bränslefilter High**	1	15440-96J00				
Impeller	1	17461-90J01			R	
Ventilspe IN		0,23-0,27			I	
Ventilspe AVG		0,30-0,34			I	
Ventkåpspackning	1	11189-96J00			R	
Balansaxelkedja (DF175)	1	12670-96J00				R
Anoder och vajrar				I	I	

DF250AP/300/300AP	Antal	Art.nr.	20 tim inkörning	Var 100:e tim 12 mån	Var 200:e tim 24 mån
Tändstift	6	BKR6E		I	R
Motorolja	8,2	MnM 10-40	R	R	R
Oljefilter	1	16510-96J00	R		R
Packning plugg	1	09168-12012	R	R	R
Växehusolja	1,1	MGO-035M	R	R	R
Oljepluggspackning	2	09168-10034	R	R	R
Saxpinne	1	09204-03003	I	I	R
Bränslefilter Low*	1	15412-93J00		I	I
Bränslefilter High**	1	15440-93J00			
Impeller	1	17461-93J00			R
Ventsp. IN 0,23-0,27					I
Ventsp. AVG 0,33-0,37					I
Ventkåpspkn. BB	1	11189-93J00			R
Ventkåpspkn. StB	1	11179-93J00			R
Anoder och vajrar				I	I

PROPELLRAR

Suzuki propellrar

Att välja rätt propeller är mycket viktigt för hur din båt betar sig. Acceleration, toppfart, bränsleekonomi, stabilitet och motorvarv påverkas alla av ditt val. Körstil och yttre förhållanden kommer också att påverka vilken typ, design och stigning du väljer för att möta just dina krav. Båt/motor- kombinationen kanske redan är utprovad av din handlare eller av båttillverkaren, för att fastställa vilken propeller som är den rätta. Din Suzukihandlare hjälper dig gärna till rätta med valet av propeller.

Stålpropellrar

Suzukis stålpropellrar ger högre prestanda och bättre livslängd än motsvarande aluminiumpropeller. Propellrarnas utformning förbättrar båtens egenskaper och stålets långa livslängd gör dem pålitliga år efter år. Suzukis stålpropellrar har dessutom ett nav av gummi som reducerar vibrationer och skyddar växelhuset om du skulle köra på någonting.

Storlek och diameter

När man pratar om propellerstorlek, t ex 13x18, anger det första talet propellerns diameter i tum. Det andra talet är propellerns stigning. Stigningen är det som säger mest om propellern. Diametern är för det mesta fastställt av tillverkaren och baseras på t ex motorns storlek och typ. Diametern utgörs av en linje igenom den tänkta cirkel som skapas av propellerns bladtoppar när propellern roterar. Diametern bestäms under utvecklingen av propellern och anpassas till motorns storlek, växelhusets utformning och ungefärlig hastighet.

Stigning

Stigning beskrivs normalt som den sträcka en propeller förflyttar sig på ett varv. Det anges i tum. En 18-tums propeller skulle alltså förflytta sig 18 tum för varje fullbordat varv. Nu går en del av kraften alltid förlorad i något som kallas "slip", detta på grund av vattnet, båtens vikt och propellerns utformning. Ju lägre "slip" desto effektivare arbetar propellern och du får en högre hastighet vid varje givet motorvarv. Propellrar med låg stigning accelererar fort men har lägre toppfart. Propellrar med hög stigning å andra sidan accelererar långsamt, men når högre i fart. En tums stigning betyder ungefär 150–200 varv på full gas. Om man går upp en tum i stigning sjunker motorvarvet 150–200 varv. Om man går ner en tum, så stiger motorvarvet lika mycket. Sträva efter att ligga i den övre delen av det rekommenderade varvtals området, då har du marginal att lasta båten utan att motorvarvet sjunker för mycket. En motor skall alltid köras inom det varvtalsområde som rekommenderas i bruksanvisningen. Körning utanför detta område kan ge mycket allvarliga motorskador som eventuellt inte omfattas av garantin.

Skillnad mellan U och V Propeller

Tidigare årsmodeller var utrustade med propellrar märkta med ett U. Under sent 80 tal ersattes de med V propellrar. Detta skedde inte vid någon specifik årsmodell utan de skedde gradvis. U propellern har rundare blad och V propellern mer vassa bladändar och mer rakevinkel. Båda är även stämplade och märkta. En 17" propeller är märkt U1700 resp. V1700. Det går också att se skillnad mellan dessa två typer genom att titta i det främre navet. U-propellern är helt öppen i navet och hela gummibussningen syns. V-propellern har ett mera stängt nav och endast lite av gummibussningen syns. Tryckbrickorna blir därför även de olika. Brickan till V-propellern har då en betydligt mindre diameter på den delen som går in i propellernavet. Idag är det betydligt

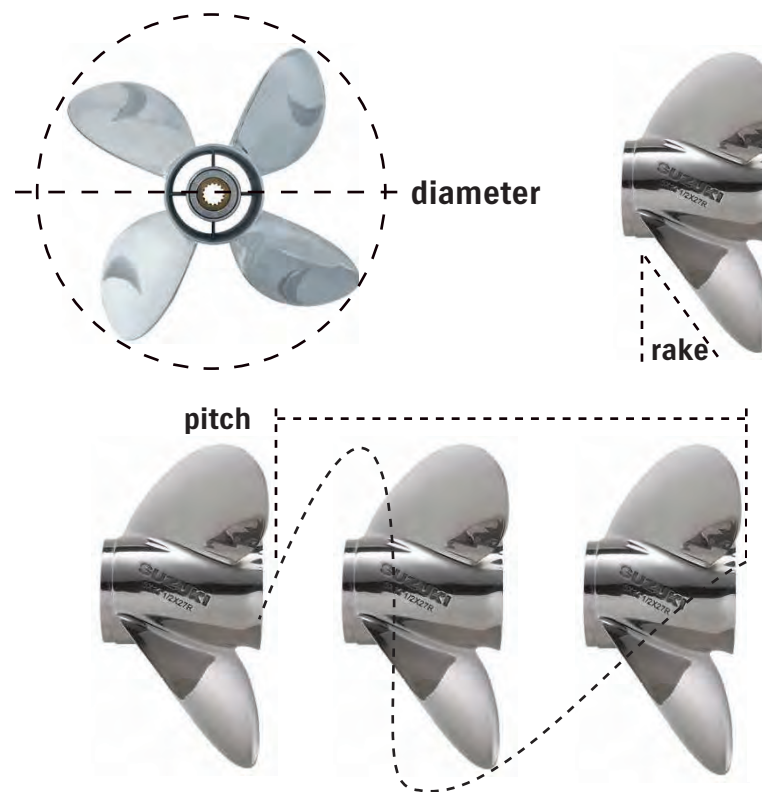
vanligare att det sitter en V-propeller även på äldre motorer då många har bytt till en sådan. V-propellern ger något bättre prestanda. Motorn kan hissas lite mer samt håller i bättre vid trimning och i girar.

Rake och cup

Rake är den vinkel i vilken bladet sitter monterat på trumman och anges i grader. En propeller med noll grader i rake har bladen vinkelrätt mot trumman. På en propeller med hög rake lutar bladen mycket bakåt på propellern. En propeller med hög rake håller kvar vattnet längre på bladen och kaviterar mindre när motorn är högt ut-trimmad, dessa propellrar ger också mer kraft att lyfta stäven. Cup är den ca en centimeter breda ytan längs propellerbladets bakre kant som har en något ökad stigning. Den går från trumman till bladspetsen. Cup används för att minimera en propellers "slip" och kavitation. Detta gör det möjligt att montera motorn högre på akterspegeln och tillåter mer ut-trim för högre stävlyft.

Större utbud

För att kunna erbjuda ett större utbud av stålpropellrar till våra motorer, samarbetar vi på KGK Motor AB med företaget Propeller Trim AB som har många års erfarenhet av våra produkter. Om du har frågor eller funderingar kring stålpropellrar är du välkommen att besöka dem på www.propellertrim.se eller ringa på telefon 08-669 01 05.



PROPELLRAR

Modell / Årtal	Art. nr	Benämnn.	Märkn.	Prop.nav	Drivpinne	Anmärkning
DT 2 1977-1996	58111-98465-019	7 3/8 x 4 1/2	A400	Ingår	09202-04002	
DT 2,2 1997-2002	58111-98452-019	7 3/8 x 4 3/4	A500	Ingår	09202-04002	
	58111-98402-019	7 3/8 x 5 3/8	A510	Ingår	09202-04002	
DF2.5 6-	58111-97J00-019	7 3/8 x 5 3/8	A510	Ingår	09202-04002	
	58111-98465-019	7 3/8 x 4 1/2	A400	Ingår	09202-04002	
DT 3,5 1979-1981	58111-98311-019	7 3/8 x 5 3/8	B510	58121-98300	09202-04002	Båda naven erfordras
	58111-98302-019	7 1/2 x 5 7/8	B600	58122-98300	09202-04002	
DT 3,5 1982-1984	58111-98304-019	7 1/2 x 5 7/8	B600	58120-98301	09202-04002	
DT 4 1978	58111-98313-019	7 3/8 x 5 7/8	B510	58120-98301	09202-04002	
DT4,5 1976-1977	58111-98722-019	7 7/8 x 5 1/8	F500	58120-99026	09202-04009	Även: 09202-05020
	58111-99722-019	7 1/8 x 5 7/8	F600	58120-99026	09202-04009	Även: 09202-05020
DT 4 1985-2002	58111-98601-019	7 1/2 x 6	C600	58120-98600	09202-04002	
	58111-98641-019	7 1/2 x 6 1/2	C610	58120-98600	09202-04002	
	58111-98630-019	7 1/2 x 7 1/2	C700	58120-98600	09202-04002	
DF 4/5 2-3	58111-98601-019	7 1/2 x 6	C600	58120-98600	09202-04002	
	58111-98640-019	7 1/2 x 6 1/2		58120-98600	09202-04002	
	58111-98651-019	7 1/2 x 7		58120-98600	09202-04002	
DF4/5 4-	58110-91J00-019	7 1/2 x 6				
DF6	58110-91JM0-019	7 1/2 x 6 1/2				
	58110-91J20-019	7 1/2 x 7				
DT 5 1978-1979	58111-98722-019	7 7/8 x 5 7/8	F500	58120-98510	09202-04009	
	58111-99722-019	7 1/8 x 5 7/8	F600	58120-98510	09202-04009	
	58111-99110-019	7 7/8 x 6 3/4	F610	58120-98510	09202-04009	
DT 5 1980-1996	58111-98722-019	7 7/8 x 5 1/8	F500	58120-98513	09209-05020	
DT6 1984-2002	58111-99722-019	7 1/8 x 5 7/8	F600	58120-98513	09209-05020	
	58111-99110-019	7 7/8 x 6 3/4	F610	58120-98513	09209-05020	
	58111-96002-019	8 1/2 x 7 1/8	F700	58120-98513	09209-05020	
	58111-99100-019	7 7/8 x 7 1/2	F710	58120-98513	09209-05020	
DT 7,5 1979	58111-96131-019	8 3/4 x 8		58120-96110		
DT 8 1980-2002	58111-98722-019	7 7/8 x 5 1/8	F500	58120-98513	09209-05020	
Ej C-mod.	58111-99722-019	7 1/8 x 5 7/8	F600	58120-98513	09209-05020	
	58111-99110-019	7 7/8 x 6 3/4	F610	58120-98513	09209-05020	
	58111-96002-019	8 1/2 x 7 1/8	F700	58120-98513	09209-05020	
	58111-99100-019	7 7/8 x 7 1/2	F710	58120-98513	09209-05020	
DT 8 C 1988-1996	58100-92DLO-019	9 1/4 x 7	E700	Ingår		
DT9,9 C 1988-1996	58100-92DMO-019	9 x 8 1/4	E800	Ingår		
	58100-92D21-019	9 x 9 1/4	E900	Ingår		
	58100-92D62-019	10 x 6 1/2	EY610	Ingår		Till modell SAIL
DT9 1974	58111-96002-019	8 1/2 x 7 1/8	F700	58120-99026	09202-04009	
DT 9 1975	Utgått			58120-93032	09209-06035	
	Utgått			58120-93032	09209-06035	

Modell / Årtal	Art. nr	Benämnn.	Märkn.	Prop.nav	Drivpinne	Anmärkning
DT 9 1976-1977	Utgått	8 1/2 x 7		58120-93028		
	Utgått	8 3/4 x 8		58120-93028		
DT 9,9 1976-1978	Utgått	8 3/4 x 8		58120-93028		
	Utgått	8 3/4 x 9		58120-93028		
	58111-93782-019	8 3/4 x 10		58120-93028		
DT 9,9 1979	58111-96131-019	8 3/4 x 8		Utgått		
	58111-96140-019	8 3/4 x 9		Utgått		
DT 9,9 1980-1982	Utgått	9 1/4 x 7	J700	Ingår		
DT 16 1980-1982	Utgått	9 1/4 x 7 1/2	J710	Ingår		
	Utgått	9 1/4 x 8	J800	Ingår		
	Utgått	9 1/4 x 8 1/2	J810	Ingår		
	Utgått	9 1/4 x 9	J900	Ingår		
DT 9,9 1983-1989	58100-93703-019	9 1/4 x 7	M701	Ingår		
DT 15 1983-1988	58100-90L40-019	9 1/4 x 8	M811	Ingår		
1997-2006						
DT 15C 1989-1996	58100-89L20-019	9 1/4 x 9	M901	Ingår		
	58100-89L30-019	9 1/4 x 10	M1001	Ingår		
	58100-89L40-019	9 1/4 x 11	M1101	Ingår		
DF 9,9 6-9	58100-93703-019	9 1/4 x 7	M701	Ingår		
DF 15 6-1	58100-90L40-019	9 1/4 x 8	M811	Ingår		
DF8A 0-	58100-89L20-019	9 1/4 x 9	M901	Ingår		
DF9.9A 0-	58100-89L30-019	9 1/4 x 10	M1001	Ingår		
	58100-89L40-019	9 1/4 x 11	M1101	Ingår		
	58100-89L50-019	9 1/4 x 9	M911	Ingår		Kraftigare blad
	58100-90L21-019	9 1/4 x 10	M1011	Ingår		Kraftigare blad
DF9.9B/15A/20A 2-	58100-89L00-019	9 1/4 x 7		Ingår		
	58100-89L20-019	9 1/4 x 9		Ingår		
	58100-89L30-019	9 1/4 x 10		Ingår		
	58100-89L40-019	9 1/4 x 11		Ingår		
	58100-90L40-019	9 1/4 x 8		Ingår		Kraftigare blad
	58100-90L50-019	9 1/4 x 12		Ingår		Kraftigare blad
	58100-90L60-019	9 1/4 x 10		Ingår		Kraftigare blad
DT 14 1975	Utgått	8 3/4 x 8		58120-93032	09209-06035	Nav 56 mm
	Utgått	8 3/4 x 9		58120-93032	09209-06035	Nav 56 mm
	58111-93782-019	8 3/4 x 10		58120-93032	09209-06035	Nav 56 mm
DT 14 1976-1978	Utgått	8 3/4 x 8		58120-93028		Nav 56 mm
	Utgått	8 3/4 x 9		58120-93028		Nav 56 mm
	58111-93782-019	8 3/4 x 10		58120-93028		Nav 56 mm
DT 14 1979	58111-96131-019	8 3/4 x 8		58120-96110		Nav 49 mm
	58111-96140-019	8 3/4 x 9		58120-96110		Nav 49 mm
DT 16 1975	Utgått	8 3/4 x 8		58120-93032	09209-06035	Nav 56 mm
	Utgått	8 3/4 x 9		58120-93032	09209-06035	Nav 56 mm
	58111-93782-019	8 3/4 x 10		58120-93032	09209-06035	Nav 56 mm

PROPELLRAR

Modell / Årtal	Art. nr	Benämnn.	Märkn.	Prop.nav	Drivpinne	Anmärkning
DT 16 1976-1978	Utgått	8 3/4 x 8		58120-93028		Nav 56 mm
	Utgått	8 3/4 x 9		58120-93028		Nav 56 mm
	58111-93782-019	8 3/4 x 10		58120-93028		Nav 56 mm
DT 16 1979	58111-96131-019	8 3/4 x 8		58120-96110		
	58111-96140-019	8 3/4 x 9		58120-96110		
DT 20 1980-1983	Utgått	9 1/4 x 8	L800	Ingår		
DT 28 1979-1982	58110-93431-019	9 1/4 x 8 1/2	L810	Ingår		
	58110-93411-019	9 1/4 x 9	L900	Ingår		
	58110-93441-019	9 1/4 x 9 1/2	L910	Ingår		
DT 20 1984-2000	58100-96371-019	10 1/4 x 9	P911	Ingår		Till äldre prop Pxx00 använd tryckbricka 57632-96312
DT 25 1983-1988	58100-96411-019	10 1/4 x 10	P1001	Ingår		Till nyare prop Pxx01 använd tryckbricka 57632-96400
1998-2001	58100-96421-019	10 1/4 x 11	P1101	Ingår		
DT 25C 1989-1996	58100-91L00-019	10 1/4 x 12	P1201	Ingår		
DT 30 1983-1988	58100-91L10-019	10 1/4 x 13	P1301	Ingår		
DT 30C 1988-1997	58100-95D01-019	10 1/4 x 14	P1401	Ingår		
DF 25 0-1	58100-96461-019	10 1/4 x 15	P1501	Ingår		
DF 30 0-	58200-96400	10 1/4 x 13	PS1300	Ingår		SST Stål
DF25 V2 6-	58100-96471-019	10 1/4 x 10	P1011	Ingår		Extra kraftig. Vid byte till ny typ måste tryckbrickan bytas
DF 25A	58100-96481-019	10 1/4 x 12	P1211	Ingår		Extra kraftig
DF30A	58100-96491-019	10 1/4 x 13	P1311	Ingår		Extra kraftig
DT 25 1974-1975	Utgått	8 3/4 x 9		58120-93032	09209-06035	Nav 56 mm
	58111-93782-019	8 3/4 x 10		58120-93032	09209-06035	Nav 56 mm
	Utgått	9 x 10 1/2		58120-93032	09209-06035	Nav 56 mm
	Utgått	9 x 11 3/4		58120-93032	09209-06035	Nav 56 mm
DT 25 1976-1979	Utgått	8 3/4 x 9		58120-93028		Nav 56 mm
	58111-93782-019	8 3/4 x 10		58120-93028	09209-06035	Nav 56 mm
	Utgått	9 x 10 1/2		58120-93028	09209-06035	Nav 56 mm
	Utgått	9 x 11 3/4		58120-93028	09209-06035	Nav 56 mm
DT 50 1977-1978	Utgått	12 1/2 x 13				
	58100-88L62-019	11 1/4 x 15	S1500	Ingår		
	Utgått	11 3/4 x 17		Ingår		
DT 40/40C 1980-2000	58100-88L00-019	11 1/2 x 9	S901	Ingår		
DT 50 1979-1984	58100-95212-019	11 1/2 x 10	S1001	Ingår		
DT 55C 1985-1998	58100-88L23-019	11 1/2 x 11	S1100	Ingår		
DT 60 1983-1984	58100-95393-019	11 5/8 x 12	S1200	Ingår		
DT 65 1979-1982	58100-88LB0-019	11 1/2 x 13	S1301	Ingår		
DT 65C 1985-1998	58100-88L52-019	11 3/8 x 14	S1400	Ingår		
DF 40/50 9-	58100-88L03-019	11 1/2 x 9	S901	Ingår		
DF 40A/50A 1-	58100-88L13-019	11 1/2 x 10	S1001	Ingår		
DF 60A 0-	58100-88L23-019	11 1/2 x 11	S1100	Ingår		
	58100-88LA0-019	11 5/8 x 12	S1200	Ingår		

Modell / Årtal	Art. nr	Benämnn.	Märkn.	Prop.nav	Drivpinne	Anmärkning	
DF40/50	58100-88LA0-019	11 5/8 x 12	S1200	Ingår			
DF40/50A	58100-88LB0-019	11 1/2 x 13	S1301	Ingår			
DF60A	58100-88L52-019	11 3/8 x 14	S1400	Ingår			
	58100-88L62-019	11 1/4 x 15	S1500	Ingår			
	58100-88L72-019	11 1/8 x 16	S1600	Ingår			
	58100-88L83-019	11 x 17	S1700	Ingår			
DT 65 1978	Utgått	11 1/4 x 14		Ingår			
	58100-88L62-019	11 1/4 x 15	S1500	Ingår			
	58100-88L72-019	10 3/4 x 16		Ingår			
DT 75 1983-1986	58100-95540-019	13 3/4 x 13	U1300	Ingår			
DT 85 1979-2000	58100-95500-019	13 1/2 x 15	U1500	Ingår			
DT 100 1990-2000	58100-95511-019	13 1/4 x 17	U1700	Ingår			
DT 115 1980-2000	58100-95550-019	13 x 18	U1800	Ingår			
DT 140 1980-2000	58100-95521-019	13 x 19	U1900	Ingår			
DF 60 8-	58100-95530-019	13 x 21	U2100	Ingår			
DF 70 8-8	58100-99E00-019	13 3/4 x 13	V1300				
	58100-94500-019	13 1/2 x 15	V1500	Ingår			
	58100-94512-019	13 1/4 x 17	V1700	Ingår			
	58100-94522-019	13 x 19	V1900	Ingår			
	58100-94532-019	13 x 21	V2100	Ingår			
	58100-94554	13 1/2 x 15	VS1500	Ingår		Stål	
	58100-94581	13 1/4 x 17	VS1700	Ingår		Stål	
	58100-94561	13 x 19	VS1900	Ingår		Stål	
	58100-94571	13 x 21	VS2100	Ingår		Stål	
	58100-99E10-019	14 x 11	V1100				
	DF 70A/80A/90A 9-	58100-87L00-019	14 x 13		Ingår		
		58100-87LB0-019	13 7/8 x 15		Ingår		
		58100-87LC0-019	13 3/4 x 17		Ingår		
58100-87LD0-019		13 3/4 x 19		Ingår			
58100-87LE0-019		13 3/4 x 21		Ingår			
58100-87L50-019		13 3/4 x 23		Ingår			
DF 90 1-8	58100-90JE0-019	14 x 15	x1500				
DF 100 8-	58100-90JA0-019	14 x 17	x1700	Ingår			
DF 115 1-	58100-90JB0-019	14 x 19	x1900	Ingår			
DF 140 2-	58100-90JC0-019	14 x 21	x 2100	Ingår			
DF 100A	58100-90JD0-019	14 x 23	x2300	Ingår			
DF 115A	99105-00700-18P	14 1/4 x 18		Ingår		Stål	
DF 140A	99105-00700-20P	14 1/4 x 20		Ingår		Stål	
	99105-00700-22P	14 1/4 x 22		Ingår		Stål	
	99105-00700-24P	14 1/4 x 24		Ingår		Stål	

PROPELLRAR & TILLBEHÖR

Modell / Årtal	Art. nr	Benämnn.	Märkn.	Prop.nav	Drivpinne	Anmärkning
DF 90/115 1-8/1- DF 140 2- Motroterande	58200-92J00	14 1/4 x 18		Ingår		Stål
	58200-92J10	14 1/4 x 20		Ingår		Stål
	58200-92J20	14 1/4 x 22		Ingår		Stål
	58200-92J30	14 1/4 x 24		Ingår		Stål
DF 150/175 6- (Även DF150TG/ 175TG/200/200AP/ 225/250/300/300AP)	58200-96J00	15 1/2 x 17		Ingår		Stål
	58200-96J10	15 1/4 x 19		Ingår		Stål
	58200-96J20	15 x 21		Ingår		Stål
	58200-96J30	14 3/4 x 23		Ingår		Stål
	58200-96J40	14 1/2 x 25		Ingår		Stål
58200-96J50	14 1/2 x 27		Ingår		Stål	
DF 150/175 6- Motroterande (Även DF150TG/ 175TG/200/200AP/ 225/250/300/300AP)	58200-96JA0	15 1/2 x 17		Ingår		Stål
	58200-96JB0	15 1/4 x 19		Ingår		Stål
	58200-96JC0	15 x 21		Ingår		Stål
	58200-96JD0	14 3/4 x 23		Ingår		Stål
	58200-96JE0	14 1/2 x 25		Ingår		Stål
58200-96JF0	14 1/2 x 27		Ingår		Stål	
DT 150 V6 DT 200 V6 DT 225 V6	58200-87D61	14 1/4 x 16		Ingår		Stål
	Utgått	14 1/4 x 16		Ingår		Stål
	58200-92E00	14 1/4 x 18		Ingår		Stål
	Utgått	14 1/4 x 18		Ingår		Stål
	58200-92E10	14 1/4 x 20		Ingår		Stål
	Utgått	14 1/4 x 20		Ingår		Stål
	58200-87E11	14 1/4 x 22		Ingår		Stål
	Utgått	14 1/4 x 22		Ingår		Stål
	58200-92E21	14 1/4 x 24		Ingår		Stål
	Utgått	14 1/4 x 24		Ingår		Stål
	58200-92E40	14 1/4 x 26		Ingår		Stål
	58200-87D50	14 1/4 x 28		Ingår		Stål
	Utgått	14 1/4 x 28		Ingår		Stål
DT V6 Motroterande	Utgått	14 1/4 x 18		Ingår		Stål
	Utgått	14 1/4 x 20		Ingår		Stål
	58200-88D20	14 1/4 x 22		Ingår		Stål
	Utgått	14 1/4 x 24		Ingår		Stål
	Utgått	14 1/4 x 26		Ingår		Stål
DF 200/225/250 4- DF300/300AP 7- (Även DF150/150TG/ 175/175TG/200AP)	58200-93L00	16 x 17		Ingår		Stål
	58200-93L10	16 x 18,5		Ingår		Stål
	58200-93L20	16 x 20		Ingår		Stål
	58200-93L30	16 x 21,5		Ingår		Stål
	58200-93L40	16 x 23		Ingår		Stål
	58200-93L50	16 x 24,5		Ingår		Stål
	58200-93L60	16 x 26		Ingår		Stål
	58200-93JL70	16 x 27,5		Ingår		Stål

Modell / Årtal	Art. nr	Benämnn.	Märkn.	Prop.nav	Drivpinne	Anmärkning
DF 200/225/250 4- DF300/300AP 7- (Även DF150/150TG/ 175/175TG/200AP) Motroterande	58200-93LE0	16 x 17		Ingår		Stål
	58200-93LA0	16 x 18,5		Ingår		Stål
	58200-93LB0	16 x 20		Ingår		Stål
	58200-93LC0	16 x 21,5		Ingår		Stål
	58200-93LD0	16 x 23		Ingår		Stål
	58200-93LF0	16 x 24,5		Ingår		Stål
	58200-93JG0	16 x 26		Ingår		Stål
DF150/175/150/175TG DF200/250/250AP DF200AP/300/300AP	58300-93J00	15 1/4 x 18		Ingår		Fyra blad, stål
	58300-93J10	15 1/4 x 20		Ingår		Fyra blad, stål
	58300-93J20	15 1/4 x 22		Ingår		Fyra blad, stål
	58300-93J30	15 1/4 x 24		Ingår		Fyra blad, stål
58300-93J40	15 1/4 x 26		Ingår		Fyra blad, stål	
DF150/175/150/175TG DF200/250/250AP DF200AP/300/300AP Motroterande	58300-93JA0	15 1/4 x 20		Ingår		Fyra blad, stål
	58300-93JB0	15 1/4 x 22		Ingår		Fyra blad, stål
	58300-93JC0	15 1/4 x 24		Ingår		Fyra blad, stål
	58300-93JD0	15 1/4 x 26		Ingår		Fyra blad, stål

Standardpropellrar vid leverans

TVÅTAKT	STIGN.	ANM.	STIGN.	ANM.	STIGN.	ANM.
DT 2,2	4 1/2		DT 140	17/19	DF 40A/50A	14
DT 4	6 1/2		DT 150	20	DF 60A 0-	16
DT 6/8 S	7 1/2		DT 225	22	DF 60 -3	15
DT 6/8 L	6 3/4		FYRTAKT		DF 60 4-9	17
DT 9,9 S/L	9		DF 2.5	5 3/8	DF 70 1-8	17
DT 15 S/L	10		DF 4/5/6	6 1/2	DF 70A/80A/90A 9-	19
DT 30	13 / 14		DF8A/9.9A 0-	9	DF 90/100/115,140 7-	21
DT 40 S	13 / 14		DF 9,9 -9	9	DF 140 -6	19
DT 40 L	13 / 14		DF 15	10	DF 150/150TG/175/175TG	21 Stål
DT 55	14		DF 9.9B/15A	9	DF200/225/250 -4	20 Stål
DT 65	15		DF 20A	10	DF200//225/250/250AP 5-	23 Stål
DT 85	15 / 17		DF 25 V2	12	DF300/300AP	23 Stål
DT 100	17		DF 25/25A/30/30A	12		
DT 115	17/19		DF 40/50	14		

PROPELLERTILLBEHÖR

Lösa delar

Motor	Tryckbricka	Yttre bricka	Låsbricka	Bricka	Mutter	Saxpinne	Anmärkning
2-takt							
DT 2 DT 2.2						09204-02001	
DT 3.5						09204-02001	
DT 4					58130-91JL0	09204-03003	
DT 5/6/8					58130-91JL0	09204-03003	
DT 8C/9.9C	57632-92D00	57633-92D00		09160-10082	09159-10050	09204-02004	
DT 9.9/15/15C	57632-94J00	57633-93901		09160-12113	09159-12014	09204-02004	
DT20/25/30	57632-96312	57633-96300		09160-14028	09159-14008	09204-03003	Till gamla PXX00 prop
DT20/25/30	57632-96400	57633-96300		09160-14028	09159-14008	09204-03003	Till nya PXX01 prop
DT 25C/30C	57632-96400	57633-96300		09160-14028	09159-14008	09204-03003	
DT 40/40C/50 1988-1992	57632-95320	57633-96300	57635-95300		09159-18004	09204-03003	
DT 40/40C/50 1993-2000	57632-95320	57633-96300		09160-18028	09159-18004	09204-03003	
DT 55/65 1988-1992	57632-95320	57633-94300	57635-95300		09159-18004	09204-03003	
DT 55/65 1993-2000	57632-95320	57633-94300		09160-18028	09159-18004	09204-03003	
DT 75/85/115/140 -91 U PROP	57635-95503	57633-95501	57635-95300		09159-18004	09204-03003	
DT 75/85/115/140 92- U PROP	57635-95510	57633-95501	57635-95300		09159-18004	09204-03003	
DT 100 1990- U PROP	57632-87E10	57633-95501	57635-95300	09160-18028	09141-18005	09204-03003	
DT 75/85/115/140 -91 V PROP	57635-94502	57633-94500	57634-94500		09141-18005	09204-03003	
DT 75/85/115/140 92- V PROP	57635-94511	57633-94500	57634-94500		09141-18005	09204-03003	
DT 100 1990- V PROP	57632-87E00	57633-94500	57634-94500		09141-18005	09204-03003	
DT 150/200/225 V6 -1989	57632-87D00	57633-87D10		09160-18019	09141-18005	09204-03003	
DT 150/200/225 V6 1990-	57632-87D31	57633-87D30		09160-18019	09141-18005	09204-03003	

4-takt							
DF 2.5 2006-						09204-02001	Brytpinne 09202-04002
DF 4/5 2002-					58130-91JL0	09204-03003	
DF 6 2003-					58130-91JL0	09204-03003	
DF 8A/9.9A 2010-	57632-94J00	57633-93901		09160-12061	09141-12050	09204-02004	
DF 9.9/15 1996-1999	57632-94J00	57633-93901		09160-12113	09141-12005	09204-02004	
DF 9.9/15 2000-	57632-94J00	57633-93901		09160-12113	09141-12005	09204-02004	
DF15, 2011-	57632-94J00			09160-12113	09141-12005	09204-02004	
DF 25/30 2000- DF25 V2 2006-	57632-96400	57633-96300		09160-14028	09141-14008	09204-03003	
DF 25A/30A	57632-91L00	57633-96300		09160-14028	09141-14008	09204-03003	
DF 40/50 1999-	57632-95320	57633-94300		09160-18028	09141-18005	09204-03003	
DF 40A /50A/60A	57632-95320	57633-94300		09160-18028	09141-18005	09204-03003	
DF 60/70 1998-	57632-87E00	57633-94500		09160-18028	09141-18005	09204-03003	
DF 70A/80A/90A 2009-	57632-87L00	57633-90J02		09160-18028	09141-18005	09204-03003	
DF 90/100/115 2001-	57635-90J01	57633-90J02		09160-18028	09141-18005	09204-03003	
DF 140 2002-	57635-92J01	57633-90J02		09160-18028	09141-18005	09204-03003	
DF 150/150TG/175/175TG 2006-	57632-93J11	57633-87D30		09160-18028	09141-18005	09204-03003	
DF 200/225/250 2004-	57632-93J11	57633-87D30		09160-18028	09141-18005	09204-03003	
DF 200AP	57632-93L01	57633-87D30		09160-18028	09141-18005	09204-03003	
DF 250AP/300/300AP	57632-93J11	57633-87D30		09160-18028	09141-18005	09204-03003	

Färdiga satser (yttre bricka/brickor, mutter, saxpinne)

Motor	Art.nr	Anm.
DT 9.9C/15 C	57630-93900	
DT 20	57630-96300	
DT 25C/30C	57630-96300	
DT 40/55/65	57630-94300	
DT 75-140	57630-94500	V-PROP
DT 75-140	57630-95500	U-PROP
V 6	57630-92E00	

Motor	Art.nr	Anm.
DF8A/9.9A	57630-99J00	
DF 9.9/15	57630-93900	
DF 15A/20A	57630-99J00	
DF 25/25A/30/30A DF 25 V2	57630-96300	
DF 40/50	57630-94300	
DF 40A/50A/60A	57630-94300	
DF 60/70	57630-94500	V-PROP
DF 60/70	57630-95500	U-PROP
DF 70A/80A/90A	57630-90J00	
DF 90/100/115/140	57630-90J00	
DF 150/150TG/175/175TG/200/200AP/225/250/300	57630-92E00	



Impellrar

Motor	År/Batch	Art.nr
2-takt		
DT2/2,2/3,5/4	Alla	17461-985M0
DT 5/6	Alla	17461-985M0
DT 7,5	Alla	17461-96101
DT 8	Alla utom C	17461-985M0
DT 8C/9,9C	Alla C	17461-92D02
DT 9,9	-1979	17461-93004
DT 9,9/16	1980-1982	17461-93501
DT 9,9/15	1983-	17461-939M0
DT 15C	1988-1997	17461-939M0
DT 20/25	-1979	17461-93004
DT 20/25/28	1980-1982	17461-93004
DT 20/25/30	1983-99/-83/-05	17461-96312
DT 25C/30C	1988-1999	17461-96312
DT 40	1980-1983	17461-94701
DT 40C	1983-2000	17461-96312
DT 50/65	-1984	17461-94701
DT 55C/65C	1983-1998	17461-94701
DT 75/85	1979-	17461-95302
DT 100 V4	1990-	17461-87E12
DT 115/140	1980-	17461-90J01
DT 150/200/225	Alla	17461-90J01

Motor	År/Batch	Art.nr
4-takt		
DF 2.5	6-	17461-97JM0
DF 4/5	2-	17461-985M0
DF 6	3-	17461-98502
DF8A/9.9A	0-	17461-939M0
DF 9,9/15	6-	17461-939M0
DF 15A/20A	2-	17461-939M0
DF 25/30	0-	17461-96312
DF 25 V2	6-	17461-96312
DF 25/30A	4-	17461-94L00
DF 40/50	9-	17461-96312
DF 40A/50A/60A	0-	17461-96312
DF 60/70	8-	17461-87E12
DF 70A/80A/90A	9-	17461-87E12
DF 90/115	1-	17461-90J01
DF 140	2-	17461-90J01
DF 150/175,150/175TG, 200AP	6-	17461-90J01
DF 200/225/250	4-	14461-93J00
DF 250AP/300/300AP	7-	14461-93J00

- Till de äldre årsmodellerna där impellern heter 17461-94500-94506 måste även ny kil beställas 09420-05005 t.o.m. serie DT 115-812174 DT 140-811649.

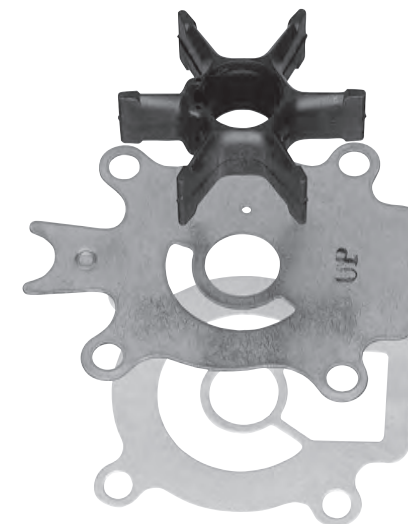
Reparationssats för vattenpump

Motor	År/Batch	Art.nr	Anm.
2-takt			
DT4	1985-2001	17400-98652	
DT5/6/8	1984-	17400-98551	Ej 8C
DT 8C/9,9C	1988-1997	17400-92D01	
DT 9,9/15/15C	1983-	17400-93951	
DT 2025/30	1983-	17400-96351	Även 17400-96401
DT 25C/30C	1988-2000	17400-96351	Även 17400-96401
DT 40 C	1984-	17400-96351	
DT 55/65	1985-2000	17400-94701	
DT 75/85	1984-2000	17400-95351	
DT 100	1990-2000	17400-87E04	
DT 115/140	1986-2000	17400-94611	
DT 150/200/225	1986-2001	17400-87D11	

Motor	År/Batch	Art.nr	Anm.
4-takt			
DF 4/5	2-	17400-98661	
DF 6	3-	17400-98661	
DF 8A/9.9A	0-	17400-99J00	
DF 9.9 DF15	6-9 6-1	17400-93951	
DF 15A/20A	2-	17400-99J00	
DF 25/30	0-5	17400-96353	
DF 25 V2	6-	17400-95J00	
DF 25/30A	4-	17400-94L00	
DF 40/50	9-	17400-96353	
DF 60A	0-	17400-88L00	
DF 60 DF70	8-9 8-8	17400-87E04	
DF 70A/80A/90A	9-	17400-87L01	
DF 90/115/140	1-5	17400-90J20	
DF 90/100/115/140	6-	17400-92J00	Även A
DF 150/175	6-	17400-96J02	Även TG
DF 200AP	5-	17400-96J02	
DF 200/225/250	4-	17400-93J02	
DF 250AP/300/300AP	7-	17400-98J01	

Spoladaptrar

Motor	Art.nr
DF9.9B-300AP	17917-87L00
Övriga	55181-95200



Reparationssats



17917-99E00

55181-95200

KOMPLETTA VÄXELHUS

Tvåtaktare

Motor	År	Rigg	Art.nr
DT 9,9/15	1989–2002	S	50010-93872-0ED/0EP
	1989–2002	L	50020-93872-0ED/0EP
DT20/25/30	1989–2002	S	50010-96822-0ED/0EP
	1989–2002	L	50020-96822-0ED/0EP
DT25C/30C			Utgått!
DT 40			Utgått!
DT 55/65			Utgått!
DT 85			Utgått!
DT 115/140			Utgått!
DT 150 S			Utgått!
DT 150 G			Utgått!
DT 150/200/225			Utgått!
DT 150/200/225			Utgått!

Fyrtaktare

Motor	Batch	Rigg	Art.nr
DF9.9B/15A/20A	2-	S	50010-89820-0EP
DF9.9B/15A/20A	2-	L	50020-89820-0EP
DF 25/30	0-	S	50010-89807-0EP
DF 25/30	0-	L	50020-89807-0EP
DF 25 V2	6-	S	50010-95812-0EP
DF 25 V2	6-	L	50020-95812-0EP
DF 25A/30A	4-	S	50010-94800-0EP
DF 25A/30A	4-	L	50020-94800-0EP
DF 40/50	9-	S	50010-87809-0EP
DF 40/50	9-	L	50020-87809-0EP
DF 40A/50A/60A	0-	S	50010-88802-0EP
DF 40A/50A/60A	0-	L	50020-88832-0EP
DF 60/70	8-	L	50020-99810-0EP
DF 60/70	8-	X	50040-99804-0EP
DF 70A/80A/90A	9-	L	50020-87843-0EP
DF 70A/80A/90A	9-	X	50040-87823-0EP
DF 90/115	1-6	L	50020-90804-0EP
DF 90/115	1-6	X	50040-90804-0EP
DF 90/100/115	7-	L	50020-90815-0EP
DF 90/100/115	7-	X	50040-90815-0EP
DF 140	2-6	L	50020-92820-0EP
DF 140	2-6	X	50040-92803-0EP
DF 140 Z	2-6	X	50040-92813-0EP
DF 140	7-	L	50020-92845-0EP
DF 140	7-	X	50040-92845-0EP
DF 140Z	7-	X	50040-92855-0EP
DF 150/175	6-	L	50020-96836-0EP
DF 150/175	6-	X	50040-96816-0EP
DF 150/175 Z	6-	X	50040-96826-0EP
DF 150/175TG	4-	L	50020-96819-0EP
DF 150/1754TG	4-	X	50040-96819-0EP
DF200/225/250	4-	X	50040-93807-0EP
DF200/225/250	7-	XX	50060-93807-0EP
DF200/225/250 Z	4-	X	50040-93817-0EP
DF200AP	5-	L	50020-96880-0EP
DF200AP	5-	X	50040-96850-0EP
DF300	7-	X	50040-98804-0EP
DF300Z	7-	X	50040-98814-0EP
DF250/300AP	4-	X	50040-95523-0EP
DF250/300AP	4-	XX	50060-98821-0EP

Komplettas växelhuss

Inkl vattenpump, styrstift, bultar m.m
KITLU40-60AS
KITLU40-60AL
KITLU70-90AL
KITLU100-140AL
KITLU100-140AX
KITLU150-175TGL
KITLU150-175TGX
KITLU150-175ZGL
KITLU150-175ZGX
KITLU200APL
KITLU200APX
KITLU200-250TX
KITLU200-250ZX
KITLU250-300APX
KITLU250300APXX

Tvåtaktare

Modell	År	Std	Alt
DT 2	1977–1990	BR4HS	
DT 2	1991–1996	BR5HS	B5HS
DT 2,2	1997-	BR5HS	
DT 3,5	1979–1984	BP6HS	
DT 4	1978	B6HS	
DT 4	1985-1992	BP5HS	
DT 4	1993–2001	BPR5HS	BP5HS
DT 70 (4,5Hk)	1974	B6HS	
DT 4,5	1975–1977	B6HS	
DT 5	1978–1992	BP6HS	
DT 5	1993–1994	BPR6HS	BP6HS
DT 5	1995–1996	BPR6HS-10	
DT 6	1984–1992	B6HS	
DT 6	1993–2002	BR6HS-10	B6HS-10
DT 100 (7 Hk)	–1974	B6HS	
DT 7,5	1975–1979	B6HS	
DT 8	1980–2002	BP6HS	
DT 8C/9,9C	1988–1995	BR6HS-10	B6HS-10
DT 150 (9 Hk)	1973	B6HS	
DT 9	1974–1977	B6HS	
DT 9,9	1976–1982	B6HS	
DT 9,9	1983–1989	B7HS	
DT 9,9C	1988–1995	BR6HS-10	B6HS-10
DT 9,9	1997–	BR7HS-10	
DT 14	1975–1979	B7HS	
DT 15	1983–1988	B7HS	
DT 15 C	1989–1995	BR7HS-10	B7HS-10
DT 15	1996–	BR7HS-10	B7HS-10
DT 300 (16Hk)	1974	B7HS	
DT 16	1975–1982	B7HS	
DT 20	1977–1985	B7HS-10	
DT 20	1986–1999	BR7HS-10	
DT 400 (25Hk)	1973	B7HS	
DT 25	1977–1985	B7HS	
DT 25	1986–1999	BR7HS-10	B7HS-10

Tvåtaktare Forts.

Modell	År	Std	Alt
DT 25C/30C	1989–1999	BR7HS-10	
DT 25	2000–2002	BR7HS-10	
DT 28	1979–1982	B7HS	
DT 30	1982–1988	B7HS	
DT 30	1999–	BR7HS-10	
DT 40	1980–1992	B8HS	
DT 40	1993–1999	BR8HS-10	B8HS-10
DT 50	1978–1983	B8HS	
DT 50	1984	B8HS-10	
DT 55	1985–1992	B8HS	
DT 55	1993–1998	BR8HS-10	
DT 60	1983–1984	B8HS-10	
DT 65	1978–1992	B8HS	
DT 65	1993–1998	BR8HS-10	
DT 75/85	1983–1992	B8HS	
DT 85	1993–2000	BR8HS-10	
DT 100	1990–1995	BR8HCS-10	Måste ha dessa stift med ett "C" i beteckningen!
DT 100	1996–2000	BR8HS-10	Måste ha "R" stift.
DT 115/140	1981–1990	B8HS	
DT 115 /140	1991–1995	BR8HCS-10	Måste ha dessa stift med ett "C" i beteckningen!
DT 115/140	1996–2000	BR8HS-10	Måste ha "R" stift.
DT 150	1988–2000	BR8HS-10	Måste ha "R" stift.
DT 200	1986–1998	BR8HS-10	Måste ha "R" stift.
DT 225	1991–2000	BR8HS-10	Måste ha "R" stift.

Fyrtaktare

Modell	År	Std	Alt
DF 2,5	6-	CR6HSA	
DF 4/5/6	2-	BPR6ES	
DF8A/9.9A	0-	CR6E	
DF 9.9/15	6–4	DCPR6E	
DF9.9 DF15	5-9 5-0	BKR6E	
DF15	1-	CPR6EA-9	
DF 9.9B/15A/20A	2-	CPR6EA-9	
DF 25/30	0-	DCPR6E	
DF 25 V2	6-	BKR6E	
DF 40/50	9-	DCPR6E	
DF 40A/50A/60A	0-	DCPR6E	
DF 60/70	8-	BPR6ES	
DF 70A/80A/90A	9-	DCPR6E	
DF 90/100/100A/115/115A	1-	BKR6E	
DF 140/140A	2-	BKR6E	
DF 150/150TG/175/175TG	6-	BKR6E	
DF 200/225/250/250AP	4-	BKR6E	
DF 200AP	5-	LKR6E	
DF 300/300AP	7-	BKR6E	



Oljevolym växelhus

Modell	Volym
2-takt	
DT 2	0,070 L
DT 3,5	0,085 L
DT 4	0,190 L
DT 5/6/8	0,240 L
DT 8C/9,9C/15C	0,175 L
DT 20/25/30	0,230 L
DT 40	0,610 L
DT 55/65	0,650 L
DT 75/85	0,700 L
DT 100	0,560 L
DT 115/140	1,100 L
DT 150/200/225	1,050 L
4-takt	
DF 2,5	0,070 L
DF 4/5/6	0,190 L
DF8A/9.9A	0,250 L
DF 9,9 6-9 DF15 6-1	0,170 L
DF 9.9B/15A/20A	0,250 L
DF 25/30	0,230 L
DF 25 V2	0,430 L
DF25/30A	0,330 L
DF 40/50	0,610 L
DF 40A/50A/60A	0,610 L
DF 60/70	1,050 L
DF 70A/80A/90A	0,850 L
DF 90/100/115/140	1,050 L
DF 150/150TG/175/175TG	1,100 L
DF200/225/250/250AP	1,100 L
DF300/300AP	1,100L

Oljevolym motor

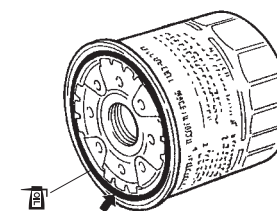
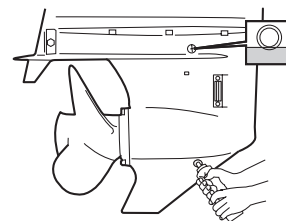
Modell	Utan filter	Med filter	Art.nr filter
4-takt			
DF 2,5	0,38		
DF 4/5/6	0,7 L		16510-91J00
DF8A/9.9A	0,7 L	0,8 L	16510-05240
DF 9,9 6-9 DF15 6-1	1,0 L	1,1 L	16510-05240
DF 9.9B/15A/20A	1,0 L	1,1 L	16510-05240
DF 25/30	3,0 L	3,2 L	16510-87J00
DF 25 V2	1,5 L	1,7 L	16510-87J00
DF 25A/30A	1,5L	1,7L	16510-87JL0
DF 40/50	2,2 L	2,4 L	16510-87J00
DF 40A/50A/60A	2,7 L	2,9 L	16510-87J00
DF 60/70	4,5 L	4,8 L	16510-87J00
DF 70A/80A/90A	4,0 L	4,3 L	16510-90J00
DF 90/100/115	5,5 L	5,7 L	16510-90J00
DF 140	5,5 L	5,7 L	16510-92J00
DF 150/175	8,0 L	8,5 L	16510-93J00
DF 150/175TG/200AP	8,0L	8,5L	16510-96J00
DF 200/225/250/250AP	8,0 L	8,2 L	16510-93J00
DF300/300AP	8,0 L	8,2 L	16510-96J00

Suzuki originalolja

Benämning	Liter	Art.nr
Super Pro, helsyntetisk motorolja SAE 5W-40	1	Super-1M
Super Pro, helsyntetisk motorolja SAE 5W-40	5	Super-5M
Mn'M, mineralolja MX SAE 15W-40	1	MNM-1M
Mn'M, mineralolja MX SAE 15W-40	5	MNM-5M
Marin 2T, tvåtaktsolja TC-W3	1	Marin-1M
Marin 2T, tvåtaktsolja TC-W3	4	Marin-4M
Växelhussolja, SAE 90, API GL-5	0,35	MG0-035M
Växelhussolja, SAE 90, API GL-5	1	MG0-1M

Oljevolym, oljetank (tvåtaktare C-modeller)

Modell	Volym
DT 8C/9,9C	0,7 L
DT 15 C	1,1 L
DT 25C/30C	2,0 L
DT 40 C	2,0 L
DT 55C/65C	3,0 L
DT 75/85	2,3 L
DT 100	4,5 L
DT 115/140	6,0 L
DT 150/200/225	8,5-9,0 L



MULTI FUNCTION GAUGE

Gauge Set, Multi	34011 -96L00 -000	Quantity
Gauge Assy, Multi	34200-96L00-000	1
Manual	-	1

Gauge Kit, Single Engine (Mech. RC)	34000 -96L00 -000	Quantity
Gauge Assy, Multi	34200-96L00-000	1
Manual	-	1
Adapter comp, Gauge	36661-96L10-000	1
Wire comp, Gauge Power	36663-98J10-000	1

Gauge Kit, Dual Engine (Mech. RC)	34000 -96L10 -000	Quantity
Gauge Assy, Multi	34200-96L00-000	2
Manual	-	1
Adapter comp, Gauge	36661-96L10-000	2
Wire comp, Gauge Power	36663-98J10-000	1
Adapter, Gauge for multi	36665-87L00-000	1
Wire comp, Extension (2')	36662-88L10-000	2
Harness assy, Network power	36663-88L00-000	1
Unit comp, Resistor Female	36665-88L00-000	1
Unit comp, Resistor Male	36665-88L10-000	1
Connector comp, Branch	36664-88L00-000	2

Gauge Kit, Dual Station	34002 -96L00 -000	Quantity
Gauge Assy, Multi	34200-96L00-000	1
Manual	-	1
Wire Trim	36682-92E00-000	1
Adapter, Gauge for dual station	36665-96L00-000	1
Wire comp, Extension (2')	36662-88L10-000	1
Connector comp, Branch	36664-88L00-000	1
Adapter, Gauge for dual station	36666-96L00-000	1

Wire Comp, Dual Gauge Adapter*	36667-96L10-000	1
--------------------------------	-----------------	---

*The wire is required to connect two gages with single engine

Gauge Kit, Single Engine (DBW)	34000 -96L20 -000	Quantity
Gauge Assy, Multi	34200-96L00-000	1
Manual	-	1
Adapter comp, Gauge	36661-96L00-000	1
Wire comp, Gauge Power	36663-98J10-000	1

Gauge Kit, Dual Engine (DBW)	34000 -96L30 -000	Quantity
Gauge Assy, Multi	34200-96L00-000	2
Manual	-	1
Adapter comp, Gauge	36661-96L00-000	2
Wire comp, Gauge Power	36663-98J10-000	1
Adapter, Gauge for multi	36667-96L00-000	1
Wire comp, Extension (2')	36662-88L10-000	2
Harness assy, Network power	36663-88L00-000	1
Unit comp, Resistor Female	36665-88L00-000	1
Unit comp, Resistor Male	36665-88L10-000	1
Connector comp, Branch	36664-88L00-000	2

Cable Set	36001 -88L00 -000	Quantity
Wire comp, Extension (2')	36662-88L10-000	1
Harness Assy, Network Power	36663-88L00-000	1
Unit Comp, Resistor Female	36665-88L00-000	1
Unit comp, Resistor Male	36665-88L10-000	1
Connector comp, Branch	36664-88L00-000	1

Styrning

TFX med mjukt hölje

Levereras i längder mellan 1,5 - 5,5 meter i 25 cm intervall
Använd artikelnummer CC2300 + längd (2.5 met = CC2300250).

TFXTREME

Extremt lättgående och mjuk reglagekabel av högsta kvalitet.
Rekommenderas speciellt vid långa längder.

Art.nr	Längd i meter
CCX63309	2,70
CCX63310	3,00
CCX63311	3,30
CCX63312	3,60
CCX63313	3,90
CCX63314	4,20
CC63315	4,50
CCX63316	4,80
CCX63317	5,10
CCX63318	5,40
CCX63319	5,70
CCX63320	6,00
CCX63322	6,60

Reglagenycklar

REGLAGENYCKLAR

Art.nr
37141-99E00 - KEY 931
37141-99E10 - KEY 932
37141-99E20 - KEY 933
37141-99E30 - KEY 934
37141-99E40 - KEY 935
37141-99E50 - KEY 936
37141-99E60 - KEY 937
37141-99E70 - KEY 938
37141-99E80 - KEY 939
37141-99E90 - KEY 940
37141-99EA0 - KEY 941
37141-99EB0 - KEY 942
37143-99E00 - CAP, KEY
37172-96L00 - Keyless, fjärrkontroll

Rigglängder (Calles ruta)

Längd i tum	Benämning
15"	S
20"	L
25"	UL/X
30"	XX

Servicekit

SERVICEKIT	
Modell	Artikelnummer
DF2/2.5 ('12-)	17400-97810
DF4/5/6 ('11-)	17400-91830
DF8A/9.9A ('10-)	17400-99840
DF9.9B/15A/20A ('13-)	17400-89810
DF20/25 V2 ('06-)	17400-95870
DF40A/50A/60A ('10-)	17400-88810
DF70A/80A/90A ('09-)	17400-87810
DF100A/115A/140A ('13-)	17400-92820
DF150/175 ('06-)	17400-96820
DF200/225/250 ('11-)	17400-93850
DF300/250A/300A/ ('11-)	17400-98860

NMEA

Artikelnummer **KIT NMEA 2000** innehåller allt som behövs för att visa motordata i tex plotter eller andra NMEA 2000 enheter.

Serviceweb

Du vet väl om att all garantiregistrering och reklamationshantering sker via vår servicesida på internet. Adress: www.serviceweb.kgkmotor.se.

När du loggat in med ditt kundnummer och lösenord kan du registrera levererade motorer, föra journal över utförd service samt göra reklamationer. På vår återförsäljarsida som numera ligger på hemsidan, www.suzuki.se, hittar du servicescheman, serviceprotokoll, de senaste servicebulletinerna och vår uppskattade webb-shop med Suzuki Marine profilprodukter. Du loggar in på återförsäljarsidan med samma log-in uppgifter som till Servicewebben.



Way of Life!



AWARDS

Our outboards have received numerous awards for innovation.

This success recognises our vast experience in developing technology (for motorcycles, ATVs and automobiles, as well as outboards) and precise understanding of our customers' needs.

Real Suzuki is built by Genuine Suzuki Accessories and Parts

Every Suzuki Product is built with Suzuki Genuine Accessories and Parts. They have the optimal design and specification tailored for the specific product and model. Every part has passed Suzuki's rigorous test standards for performance, quality, durability, safety and comfort. We recommend that you choose Suzuki Genuine Accessories and Parts when you need to repair your Suzuki or replace consumable parts such as filters, belt, etc.

Each genuine Accessories and Parts is the perfect match for your Suzuki Product!



GET YOUR "SUZUKI COLLECTION" CATALOGUE NOW!

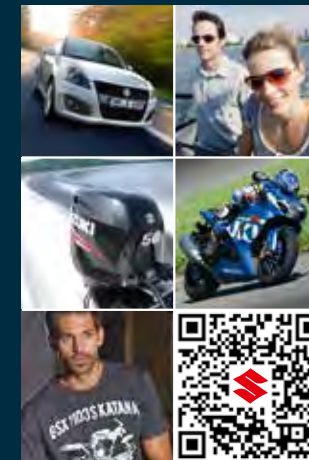
You want the perfect outfit for yourself and unique Suzuki merchandise? More you can find in the current Suzuki collection catalogue you can get from your Suzuki partner. Suzuki International Europe GMBH reserves the right to change, without notice, specifications, colours, materials and other items of clothing and merchandise products. Individual accessory items may be discontinued without notice. Product may vary from image shown. Please check with your local Suzuki Dealer for any such changes. Please confirm the full specification of your chosen accessory prior to purchase and fitment. Actual colours may differ slightly from the colours in this brochure. All details are correct at time of going to press.

Suzuki accessories are designed specifically for Suzuki vehicles and are subject to the same quality standards as the vehicles themselves. We would like to draw your specific attention to the fact that only Suzuki original accessories are tested and approved by Suzuki. The requirements they have to meet are set out in the relevant manuals. Under certain circumstances, the installation and/or usage of other accessory parts may therefore have a negative impact on the characteristics of your vehicle as set out in the design specifications, thereby impairing ride safety. Suzuki cannot, under any circumstances, be made liable for damage occurring from the use of any accessory that is not a Suzuki original accessory.

Subject to engineering and design modifications without prior notice. Please consult the current price list for details of accessory prices.

The details given in this brochure are non-binding and are purely for informational purposes. Errors excepted.

SUZUKI IS MORE THAN MARINE.



Automobile, motorbike and marine - 100 years of innovation. Visit our homepage via QR-code and learn more about Suzuki - way of life.

Suzuki International Europe GmbH,
Suzuki Allee 7, 64625 Bensheim

Details of many more original accessories and other extras can be found at: www.suzuki.eu

Your Suzuki partner:

www.suzukimarin.se